



TESSUTO
E PELLE
FABRIC
AND
LEATHER
COLLECTION 2019

TESSUTO FABRIC

Collezione Collection	Nome Name	Cat. Composizione Cat. Composition	Peso Weight g/mi	Manutenzione Maintenance	Note Notes	
	CARLOS	C 53%PP 27%PL 20%CO	540	○ ● ● ● ● ● ● ● ● ● ●	●	
	CHANDRA	C 47%CO 34%PL 13%VI 5%LI 1%PA	560	● ● ● ● ● ● ● ● ● ●	● eliminated	
	DREAM	C 100%PL	620	● ● ● ● ● ● ● ● ● ●	● eliminated	
	KAMI	D 71%CO 21%PL 8%PC	750	● ● ● ● ● ● ● ● ● ●	●	
	TIERRA (New)	D 63%CO 37%LI	532	○ ● ● ● ● ● ● ● ● ● ●	●	
Cromia	BOSTON	E 70%VI 30%LI	540	● ● ● ● ● ● ● ● ● ●	●	
Élite	ÉLITE FIAM	E 55%VI 25%CO 10%LI 7%PL 3%PC	750	● ● ● ● ● ● ● ● ● ●	●	
Natural	MINO	E 65%LI 35%VI	610	● ● ● ● ● ● ● ● ● ●	● eliminated	
Natural	NARA	E 60%CO 40%LI	980	● ● ● ● ● ● ● ● ● ●	● eliminated	
Natural	SHIRA	E 70%VI 30%LI	709	● ● ● ● ● ● ● ● ● ●	● eliminated	
	SUAVE	E 100%PL	580	● ● ● ● ● ● ● ● ● ●	● Tessuto idrorepellente e antimacchia Water repellent and anti-stain fabric	
	TELLARO (New)	E 48%PC 24%WO 6%CO 22%PL	1020	● ● ● ● ● ● ● ● ● ●	● Tessuto antimacchia Anti-stain fabric	
Natural	YAMA	E 70%CO 25%VI 5%LI	850	● ● ● ● ● ● ● ● ● ●	● eliminated	
Riflessi 2	ZEUS	E 100%LI	680	● ● ● ● ● ● ● ● ● ●	●	
	ANCUD	F 53%VI 21%PL 13%CO 10%LI 2%PC 1%AF	646	● ● ● ● ● ● ● ● ● ●	●	
Texstyle	DOMMEL	F 61%VI 14%CO 10%LI 10%PL 5%PC	900	● ● ● ● ● ● ● ● ● ●	●	
Texstyle	ERENIK	F 30%PL 28%PC 21%VI 12%CO 9%LI	860	● ● ● ● ● ● ● ● ● ●	●	
Texstyle	FULDA	F 70%CO 15%WO 15%PC	505	● ● ● ● ● ● ● ● ● ●	●	
Riflessi 1	SHABBY	F 100%LI	650	● ● ● ● ● ● ● ● ● ●	● eliminated	
Élite	ÉLITE SPIN	F 55%VI 25%CO 10%LI 7%PL 3%PC	950	● ● ● ● ● ● ● ● ● ●	●	
Élite	ÉLITE UNI	F 55%VI 25%CO 10%LI 7%PL 3%PC	950	● ● ● ● ● ● ● ● ● ●	●	
Texstyle	TRIGNO	F 33%PL 28%PC 24%VI 9%LI 6%CO	920	● ● ● ● ● ● ● ● ● ●	●	
Cromia	BALTIMORA	G 50%PC 23%LI 19%CO 8%NY	990	● ● ● ● ● ● ● ● ● ●	●	
	FLAMBÈ	G 62%LI 27%VI 11%CO	825	● ● ● ● ● ● ● ● ● ●	●	
Cromia	MIAMI	G 48%VI 34%CO 10%PL 5%LI 3%PC	1080	● ● ● ● ● ● ● ● ● ●	●	
Natural	NIKKO	G 54%JU 46%LI	670	● ● ● ● ● ● ● ● ● ●	● eliminated	
Layers 3	DEEP	G 60%CO 40%LI	700	○ ● ● ● ● ● ● ● ● ● ●	●	
Élite	ÉLITE DIS	G 59%CO 31%VI 6%LI 4%PC	820	● ● ● ● ● ● ● ● ● ●	●	
Atelier	GLEN (New)	G 30%VI 30%CO 24%PL 16%PC	600	● ● ● ● ● ● ● ● ● ●	●	
	LAMA	G 65%WO 15%WP 20%PA	560	● ● ● ● ● ● ● ● ● ●	● Tessuto ignifugo classe 1 IM Fireproof fabric class 1 IM	
	LHASA	G 39%LI 35%CO 16%PL 10%LI	1000	○ ● ● ● ● ● ● ● ● ● ●	●	
Vanity	MOLESKIN (New)	G 32%PC 29%CO 10%LI 26%VI 3%PL	920	● ● ● ● ● ● ● ● ● ●	●	
Riflessi 2	PLAZA	G 70%CO 30%VI	800	● ● ● ● ● ● ● ● ● ●	●	
	RABAT	G 70%VI 30%LI	840	● ● ● ● ● ● ● ● ● ●	● eliminated	
	TANGERI	G 70%VI 30%LI	840	● ● ● ● ● ● ● ● ● ●	● eliminated	
	TOKYO	G 52%VI 25%CO 12%LI 11%PL	890	● ● ● ● ● ● ● ● ● ●	●	
Riflessi 1	VEGAS	G 55%VI 45%CO	780	● ● ● ● ● ● ● ● ● ●	●	
	VELLUTO	G 100%CO	728	● ● ● ● ● ● ● ● ● ●	●	
Atelier	ENGLAND (New)	H 83%LI 17%CO	854	● ● ● ● ● ● ● ● ● ●	●	
Vanity	MELUN (New)	H 39%VI 18%PL 17%PC 15%WV 11%CO	1043	● ● ● ● ● ● ● ● ● ●	●	
Cuscini	PAPILLON	H 95%CO 5%VI	550	● ● ● ● ● ● ● ● ● ●	● eliminated	
Natural	SANCHI	H 70%VI 30%LI	668	● ● ● ● ● ● ● ● ● ●	●	
Atelier	SHERPA (New)	H 34%VI 33%PC 17%WO 8%PL 4%LI 4%CO	1316	● ● ● ● ● ● ● ● ● ●	●	
Layers 3	TERRANOVA	H 51%VI 35%CO 14%LI	896	● ● ● ● ● ● ● ● ● ●	●	
Atelier	HILLS (New)	Top 100%PL	953	● ● ● ● ● ● ● ● ● ●	●	

PELLE LEATHER

Collezione Collection	Nome Name	Cat. Pelle Cat. Leather	Spessore Thickness mm	Rifinitura Finishing	Note Notes
Pelle 1	NAVA	K Bovina europea; Fiore corretto European cattle; Corrected grain	1.0 - 1.2	Pigmenti all'acqua Water pigments	
Pelle 1	SELVA	K Bovina europea; Fiore corretto European cattle; Corrected grain	1.4 - 1.6	Pigmenti all'acqua Water pigments	
Pelle 2	FASHION	W Bovina europea; Fiore corretto European cattle; Corrected grain	1.2 - 1.3	Resina all'acqua Water resin	
Pelle 3	CIELO	Y Bovina europea; Anilina con grana naturale European cattle; Aniline with natural grain	1.2 - 1.4	Esente None	
Pelle 3	LUXURY	Y Bovina europea; Pieno fiore con grana naturale European cattle; Full grain with natural grain	0.9 - 1.1	Oli, cere naturali e resine Oils, natural waxes and resins	
Pelle 2	SETANIL	Y Bovina europea; Pieno fiore con grana naturale European cattle; Full grain with natural grain	1.4 - 1.6	Poliuretani pregiati Rich polyurethane resin	
Pelle 3 Layers 3	VINTAGE	Y Bovina europea; Anilina con grana naturale European cattle; Aniline with natural grain	0.8 - 1.0	Esente None	Da utilizzare per rivestimento DECÓ Y. To be used for decó cover.
Pelle 3	WORN	Y Bovina europea; NABUK European cattle; NABUK	1.3 - 1.5	Esente None	Nabuckata a mano. Hand-made nabuk effect.
Pelle 3	NABUK	Z Bovina europea; NABUK European cattle; NABUK	1.1 - 1.3	Esente None	
Pelle 3	STELVIO zero impact	Z Bovina europea; Anilina con grana naturale European cattle; Aniline with natural grain	1.4 - 1.6	Esente None	Esente cromo e metalli pesanti. Chrome and heavy metal-free.
Pelle 3	WILD	Z Bovina europea; Anilina con grana naturale European cattle; Aniline with natural grain	1.1 - 1.3	Esente None	

LEGENDA LEGEND

- Standard
Standard
- Con prelavaggio
With fabric pre-wash
- Consigliato anche per rivestimento DECÓ.
Recommended for DECÓ cover too.
- Da utilizzare solo per cuscini arreda.
To use only for arreda cushions.
- Può presentare lievi imperfezioni a garanzia della naturalità del prodotto.
It could have slight imperfections as guarantee of the naturalness of the product.
- Può presentare lievi imperfezioni e un diverso grado di lucentezza e tonalità a garanzia della naturalità del prodotto.
It could have slight imperfections and various degrees of shine and shades. All this is a guarantee of the naturalness of the product.

ANNOTAZIONI NOTES

Il rivestimento BICOLORE, costituito dall'abbinamento di due varianti di tessuto con le medesime caratteristiche di manutenzione, è disponibile solo per quei modelli presenti nel Listino Prezzi désirée che prevedono tale opzione.

Il rivestimento DECÓ, costituito dall'abbinamento della pelle Vintage cucita con un tessuto lavabile in acqua, è disponibile solo per quei modelli presenti nel Listino Prezzi désirée che prevedono tale opzione. Il rivestimento DECÓ, è lavabile esclusivamente a mano in acqua, il lavaggio a secco e qualsiasi trattamento al cloro danneggiano la pelle. Si consiglia di utilizzare combinazioni di colore in tono, per evitare variazioni di tonalità dopo il lavaggio.

The TWO-TONE cover is made of matching two color versions of the selected fabrics, it's available only for models with this option (see price list). The DECÓ cover is made of matching leather Vintage stitched with a washable fabric in water, it's available only for models with category "DECÓ" (see price list). DECÓ cover must be washed exclusively by hand in water. Dry cleaning or any other chlorine-based treatment damages leather. It is advisable to combine tone-on-tone colours together to prevent the shades from changing after they are washed.

Tessuto Fabric	Collezione Collection	
ANCUD		PAG. 5
BALTIMORA	Cromia	PAG. 51
BOSTON	Cromia	PAG. 50
CARLOS		PAG. 7
DEEP	Layers 3	PAG. 60
DOMMEL	Texstyle	PAG. 80
ÉLITE DIS	Élite	PAG. 58
ÉLITE FIAM	Élite	PAG. 57
ÉLITE SPIN	Élite	PAG. 57
ÉLITE UNI	Élite	PAG. 57
ENGLAND	Atelier	PAG. 48
ERENIK	Texstyle	PAG. 79
FLAMBÉ		PAG. 14
FULDA	Texstyle	PAG. 81
GLEN	Atelier	PAG. 48
HILLS	Atelier	PAG. 47
KAMI		PAG. 18
LAMA		PAG. 21
LHASA		PAG. 24
MELUN	Vanity	PAG. 84
MIAMI	Cromia	PAG. 52
MOLESKIN	Vanity	PAG. 83
PLAZA	Riflessi 2	PAG. 76
SANCHI	Natural	PAG. 67
SHERPA	Atelier	PAG. 47

Tessuto Fabric	Collezione Collection	
SUAVE		PAG. 32
TELLARO		PAG. 37
TERRANOVA	Layers 3	PAG. 61
TIERRA		PAG. 39
TOKYO		PAG. 42
TRIGNO	Texstyle	PAG. 79
VEGAS	Riflessi 1	PAG. 73
VELLUTO		PAG. 44
ZEUS	Riflessi 2	PAG. 75

Pelle Leather	Collezione Collection	
CIELO		PAG. 85
FASHION		PAG. 87
LUXURY		PAG. 90
NABUK		PAG. 92
NAVA		PAG. 94
SELVA		PAG. 96
SETANIL		PAG. 98
STELVIO zero impact		PAG. 100
VINTAGE		PAG. 102
WILD		PAG. 104
WORN		PAG. 106



ANCUD 04 PERLA



ANCUD 05 BIANCO



ANCUD 06 NATUR



ANCUD 07 BEIGE



ANCUD 03 CORDA



ANCUD 09 MARRON



ANCUD 11 MORO



ANCUD 20 MELA



ANCUD 18 MANDARINO



ANCUD 17 ARANCIO



ANCUD 14 LILLA



ANCUD 15 PRUGNA



ANCUD 12 OCEAN

Nome Name	ANCUD
Categoria Category	F
H. pezza (cm) Roll height (cm)	140
Peso (gr/mtl) Weight (gr/mtl)	646
Abrasione (giri) Abrasion (giri)	18.000
Composizione Composition	53%VI 21%PL 13%CO 10%LI 2%PC 1%AF
Manutenzione Maintenance	    
Note Notes	

CLANO_0714



CARLOS 12 PERLA



CARLOS 01 BIANCO



CARLOS 02 CREMA



CARLOS 03 NATUR



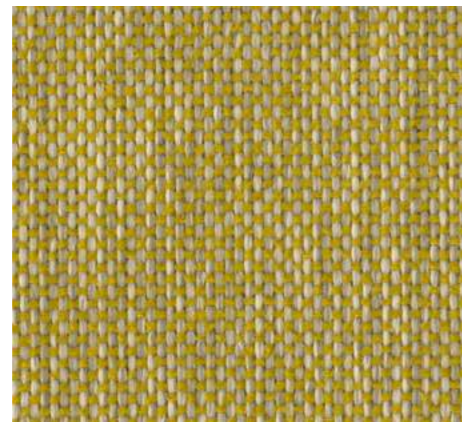
CARLOS 04 GRIMAR



CARLOS 05 MARRON



CARLOS 13 ANTRACITE



CARLOS 06 GIALLO



CARLOS 07 MELA



CARLOS 08 ARANCIO



CARLOS 09 ROSSO



CARLOS 10 FUCSIA



CARLOS 11 BLU

Nome Name	CARLOS
Categoria Category	C
H. pezza (cm) Roll height (cm)	138
Peso (gr/mtl) Weight (gr/mtl)	540
Abrasione (giri) Abrasion (giri)	30.000
Composizione Composition	53%PP 27%PL 20%CO
Manutenzione Maintenance	
Note Notes	Il prelavaggio permette la manutenzione. Prewash allows subsequent washing.

CLCA0_0714

Flambè cat.G



FLAMBÈ 01 NATUR



FLAMBÈ 02 SABBIA



FLAMBÈ 03 ARGILLA



FLAMBÈ 11 MORO



FLAMBÈ 09 SIENA



FLAMBÈ 10 BORDEAUX



FLAMBÈ 06 PRUGNA



FLAMBÈ 07 MELANZANA



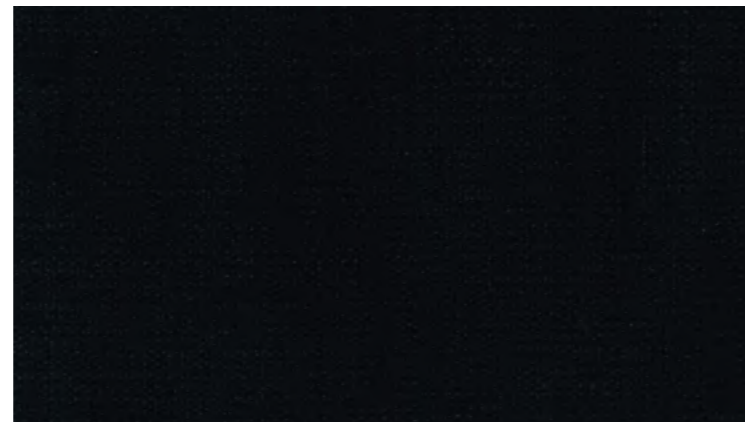
FLAMBÈ 04 CELESTE



FLAMBÈ 05 MARINA



FLAMBÈ 08 BLU



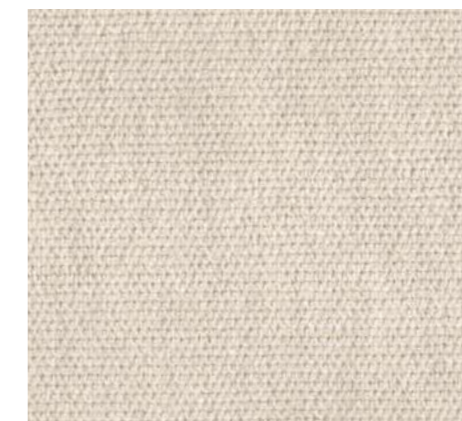
FLAMBÈ 12 NERO

Nome <i>Name</i>	FLAMBÈ
Categoria <i>Category</i>	G
H. pezza (cm) <i>Roll height (cm)</i>	140
Peso (gr/mtl) <i>Weight (gr/mtl)</i>	825
Abrasione (giri) <i>Abrasion (giri)</i>	45.000
Composizione <i>Composition</i>	62%LI 27%VI 11%CO
Manutenzione <i>Maintenance</i>	
Note <i>Notes</i>	

CLFB0_0418



KAMI 01 BIANCO



KAMI 28 AVORIO



KAMI 31 CORDA



KAMI 02 CREMA



KAMI 03 SABBIA



KAMI 30 TERRA



KAMI 34 OCRA



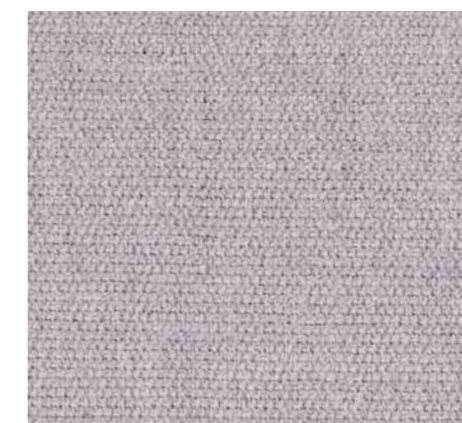
KAMI 26 MELA



KAMI 16 ARANCIO



KAMI 08 ROSSO



KAMI 04 GRIGIO



KAMI 20 ANTRACITE



KAMI 07 ROSA



KAMI 24 MALVA



KAMI 14 BORDEAUX



KAMI 25 FUCSIA



KAMI 17 VIOLA



KAMI 05 LAVANDA



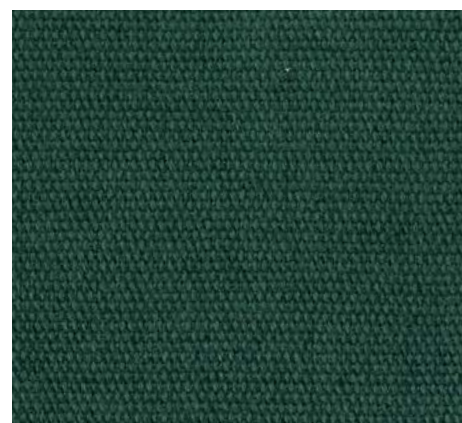
KAMI 10 ZAFFIRO



KAMI 36 CIELO



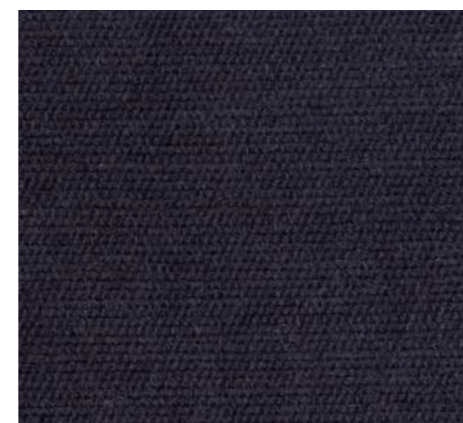
KAMI 22 AZZURRO



KAMI 21 SMERALDO



KAMI 09 BLU



KAMI 11 OCEAN

Nome Name	KAMI
Categoria Category	D
H. pezza (cm) Roll height (cm)	138
Peso (gr/mtl) Weight (gr/mtl)	750
Abrasione (giri) Abrasion (giri)	20.000
Composizione Composition	71%CO 21%PL 8%PC
Manutenzione Maintenance	
Note Notes	

CLKM0_0714



LAMA 701 SABBIA



LAMA 702 MARRON



LAMA 706 TERRA



LAMA 707 MORO



LAMA 805 LIME



LAMA 810 MELA



LAMA 803 VERDE



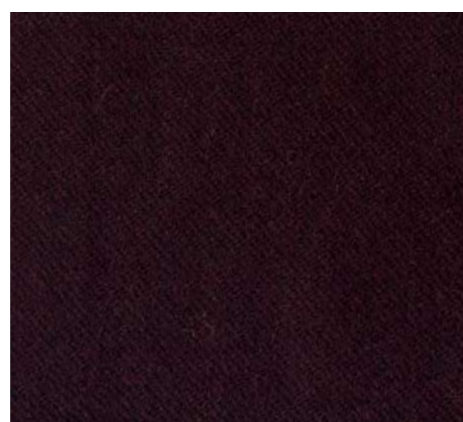
LAMA 809 ARANCIO



LAMA 712 ROSSO



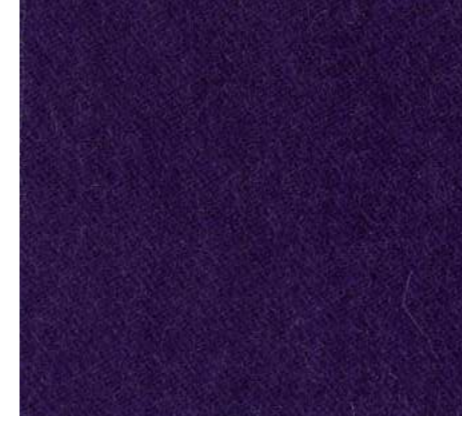
LAMA 804 FRAGOLA



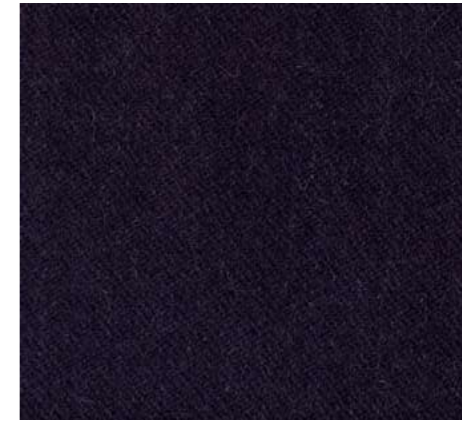
LAMA 711 BORDEAUX



LAMA 802 FUCSIA



LAMA 808 VIOLA



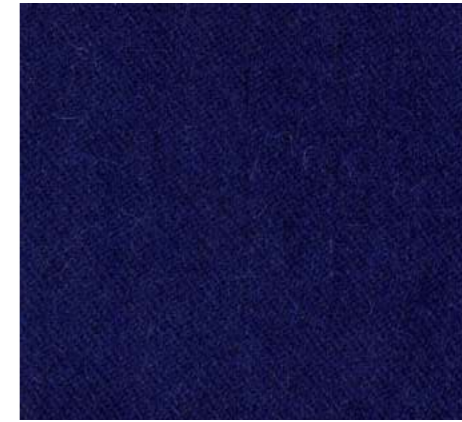
LAMA 807 PRUGNA



LAMA 806 CELESTE



LAMA 811 AZZURRO



LAMA 812 BLU



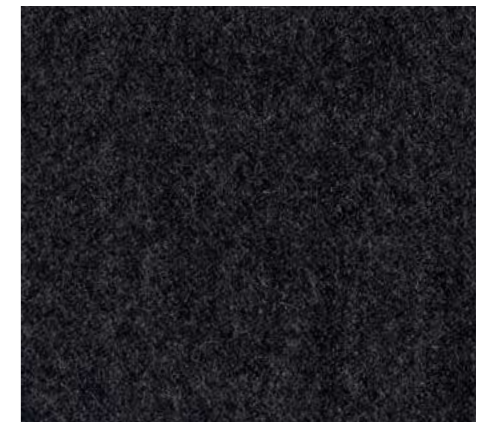
LAMA 710 OCEAN



LAMA 801 PERLA



LAMA 708 GRIGIO



LAMA 709 ANTRACITE



LAMA 705 NERO

Nome <i>Name</i>	LAMA
Categoria <i>Category</i>	G
H. pezza (cm) <i>Roll height (cm)</i>	140
Peso (gr/mtl) <i>Weight (gr/mtl)</i>	560
Abrasione (giri) <i>Abrasion (giri)</i>	100.000
Composizione <i>Composition</i>	65%WO 15%WP 20%PA
Manutenzione <i>Maintenance</i>	
Note <i>Notes</i>	Tessuto ignifugo di classe 1 IM. <i>Fireproof fabric class 1 IM.</i>

CLLM0_0715



LHASA 01 NATUR



LHASA 02 CORDA



LHASA 03 ARGILLA



LHASA 04 TERRA



LHASA 05 PRATO



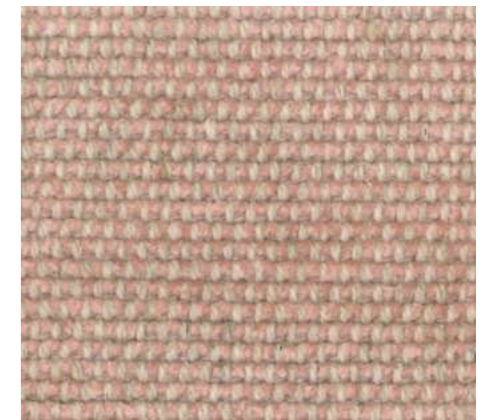
LHASA 06 ZAFFERANO



LHASA 07 MATTONE



LHASA 08 BAROLO



LHASA 09 ROSA



LHASA 10 GRANO



LHASA 11 MARINA



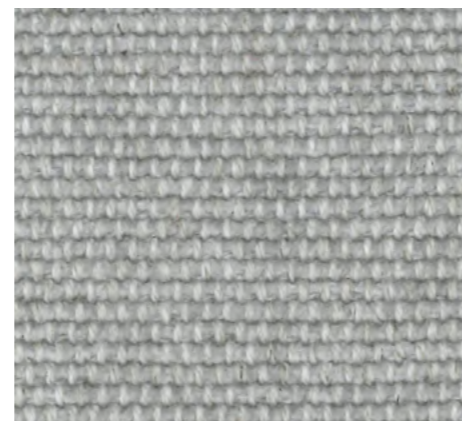
LHASA 12 SMERALDO



LHASA 13 DENIM



LHASA 14 BLU



LHASA 15 PERLA



LHASA 16 NOTTE

Nome <i>Name</i>	LHASA
Categoria <i>Category</i>	G
H. pezza (cm) <i>Roll height (cm)</i>	140
Peso (gr/mtl) <i>Weight (gr/mtl)</i>	1000
Abrasione (giri) <i>Abrasion (giri)</i>	40.000
Composizione <i>Composition</i>	39%LI 35%CO 16%PL 10%LI
Manutenzione <i>Maintenance</i>	
Note <i>Notes</i>	Il prelavaggio permette la manutenzione. Prewash allows subsequent washing.

CLLS0_0417

Suave cat.E



SUAVE 01 BIANCO



SUAVE 02 AVORIO



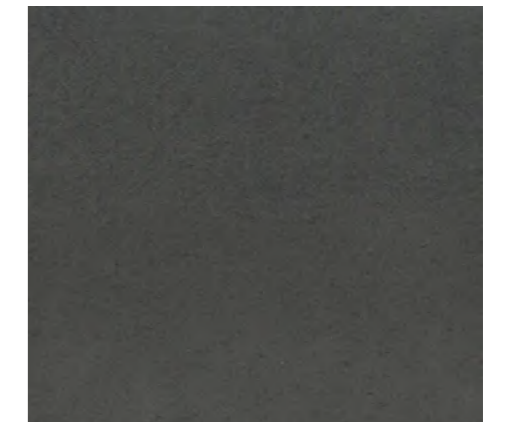
SUAVE 03 SABBIA



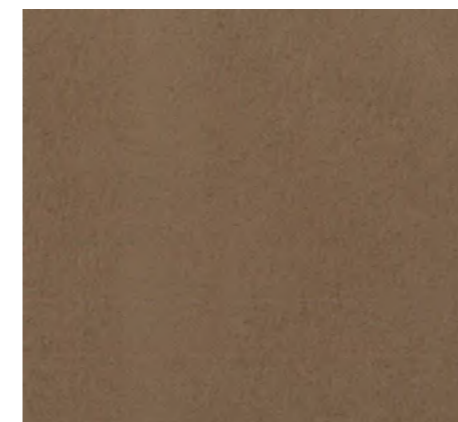
SUAVE 04 ARGILLA



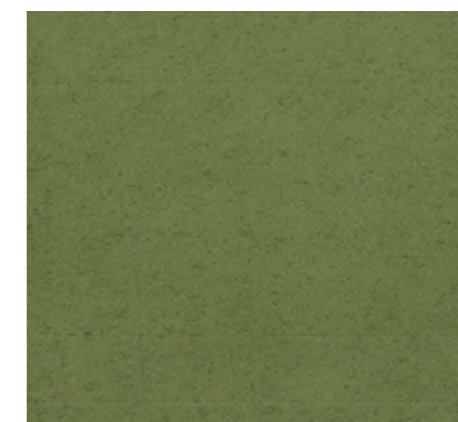
SUAVE 05 SEPIA



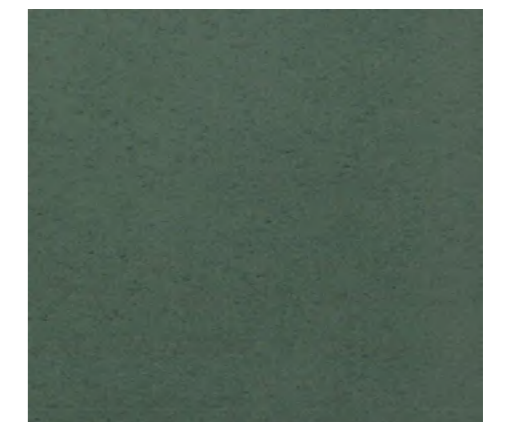
SUAVE 06 TERRA



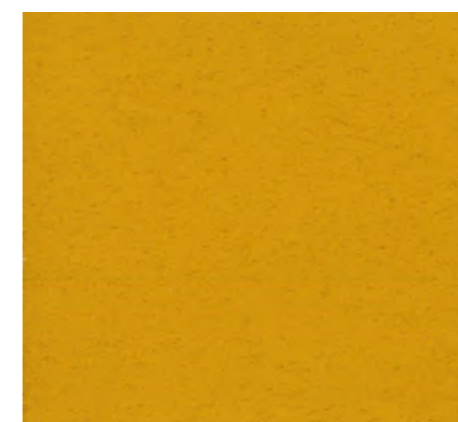
SUAVE 07 CAMMELLO



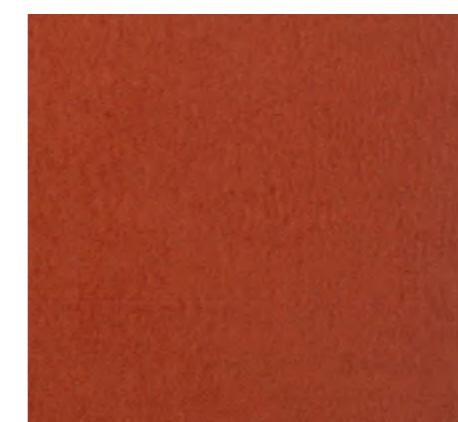
SUAVE 08 VERDE



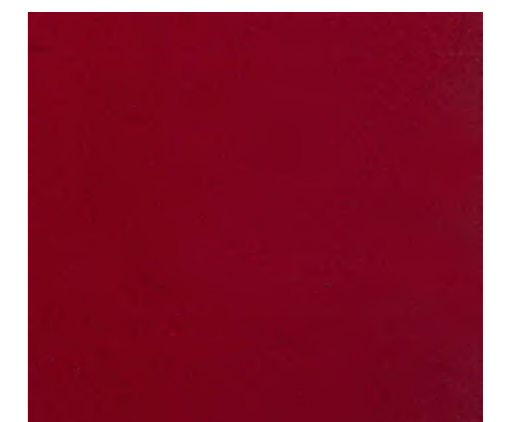
SUAVE 09 PRATO



SUAVE 10 OCRA



SUAVE 11 ARANCIO



SUAVE 12 ROSSO



SUAVE 13 BORDEAUX



SUAVE 14 CIPRIA



SUAVE 15 TURCHESE



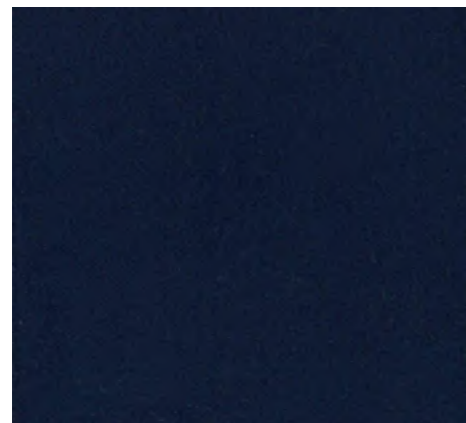
SUAVE 16 PAVONE



SUAVE 17 OTTANIO



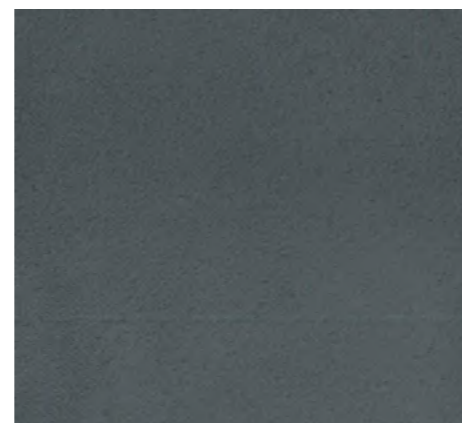
SUAVE 18 BLU



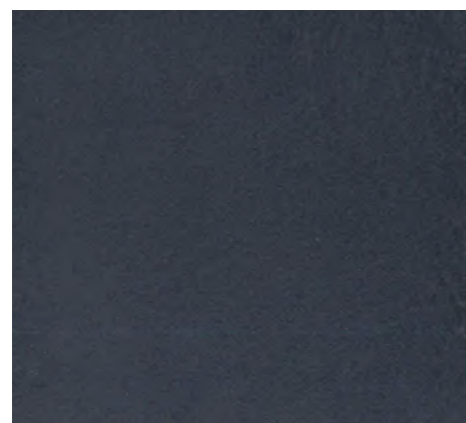
SUAVE 19 OCEAN






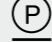

SUAVE 20 PERLA



SUAVE 21 PIOMBO



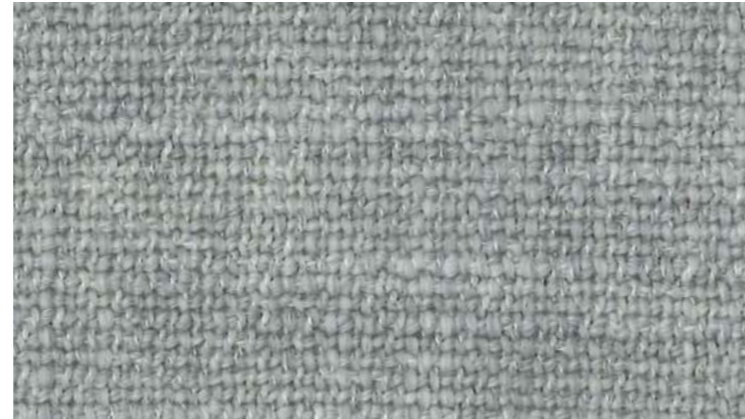
SUAVE 22 ANTRACITE

Nome Name	SUAVE
Categoria Category	E
H. pezza (cm) Roll height (cm)	140
Peso (gr/mtl) Weight (gr/mtl)	580
Abrasione (giri) Abrasion (giri)	40.000
Composizione Composition	100% PL
Manutenzione Maintenance	    
Note Notes	Tessuto idrorepellente e antimacchia. Water repellent and anti-stain fabric.

CLSV0_0418



TELLARO 12 BIANCO



TELLARO 45 PERLA



TELLARO 46 CORDA



TELLARO 31 MARRON



TELLARO 20 TERRA








TELLARO 43 MALVA



TELLARO 14 GRIGIO



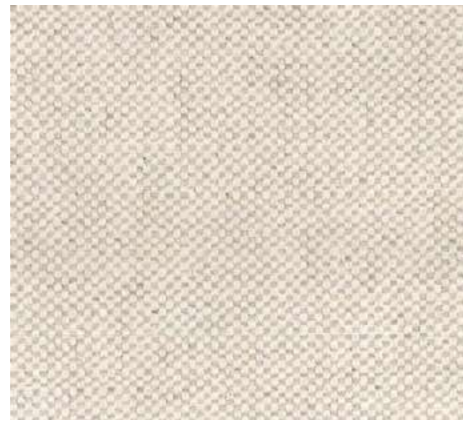
TELLARO 15 ANTRACITE

Nome Name	TELLARO
Categoria Category	E
H. pezza (cm) Roll height (cm)	140
Peso (gr/mtl) Weight (gr/mtl)	1020
Abrasione (giri) Abrasion (giri)	30.000
Composizione Composition	48%PC 24%WO 6%CO 22%PL
Manutenzione Maintenance	    
Note Notes	Tessuto antimacchia. Anti-stain fabric.

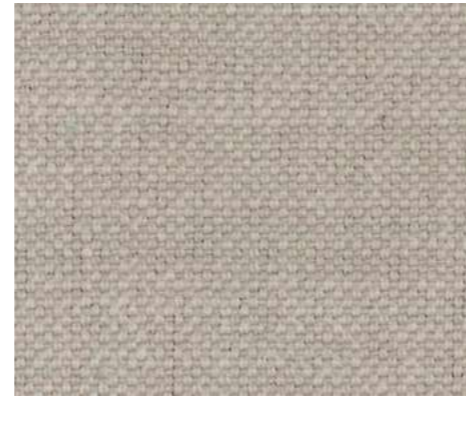
CLTLO_0419



TIERRA 100 BIANCO



TIERRA 101 NATUR



TIERRA 102 SABBIA



TIERRA 103 SACCO



TIERRA 104 TERRA



TIERRA 105 ARDESIA



TIERRA 106 OCRA



TIERRA 107 MELA



TIERRA 108 SALVIA



TIERRA 109 MENTA



TIERRA 110 ARGENTO



TIERRA 111 CENERE



TIERRA 112 NERO



TIERRA 113 MANDARINO



TIERRA 114 ARANCIO



TIERRA 115 SIENA



TIERRA 116 CORALLO



TIERRA 117 BORDEAUX



TIERRA 118 CIPRIA



TIERRA 119 PRUGNA



TIERRA 120 MELANZANA



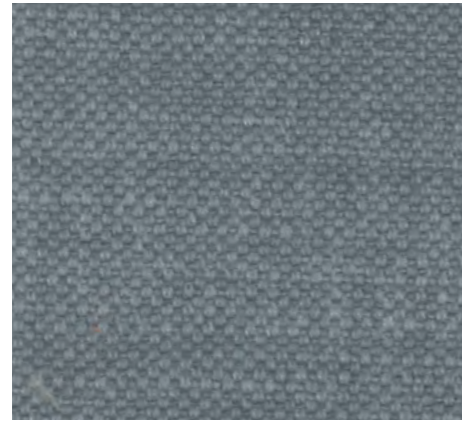
TIERRA 121 OTTANIO



TIERRA 122 AZZURRO



TIERRA 123 CIELO



TIERRA 124 AVIO



TIERRA 125 BLU

Nome
Name **TIERRA**

Categoria
Category **D**

H. pezza (cm)
Roll height (cm) **140**

Peso (gr/mtl)
Weight (gr/mtl) **532**

Abrasione (giri)
Abrasion (giri) **32.500**

Composizione
Composition **63%CO 37%LI**

Manutenzione
Maintenance 

Note
Notes Il prelavaggio permette la manutenzione.  Prewash allows subsequent washing.

CLTR0_0619



TOKYO 02 NATUR



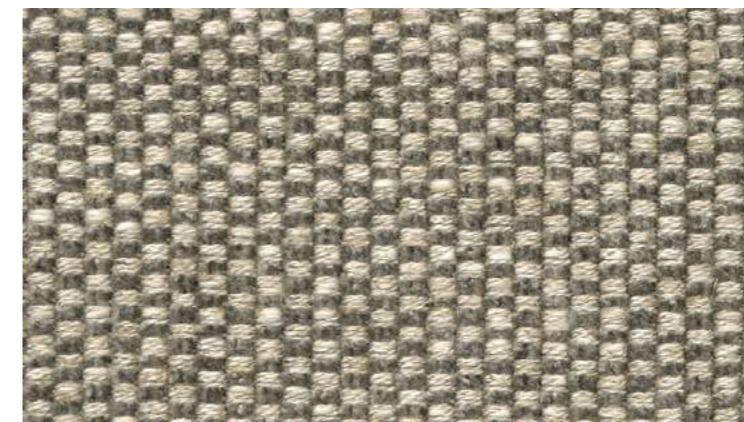
TOKYO 03 PAGLIA



TOKYO 06 MELA



TOKYO 09 PERLA



TOKYO 13 CORDA



TOKYO 10 AVIO



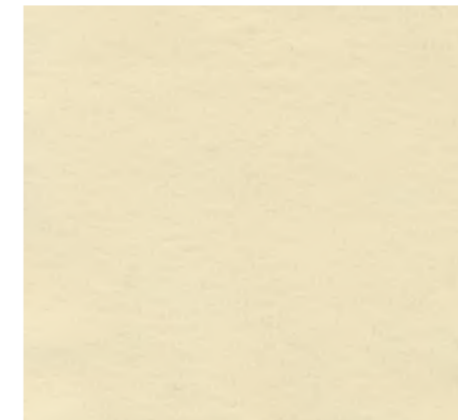
TOKYO 12 CENERE



TOKYO 11 AZZURRO

Nome Name	TOKYO
Categoria Category	G
H. pezza (cm) Roll height (cm)	140
Peso (gr/mtl) Weight (gr/mtl)	890
Abrasione (giri) Abrasion (giri)	38.000
Composizione Composition	52%VI 25%CO 12%LI 11%PL
Manutenzione Maintenance	
Note Notes	Il prelavaggio permette la manutenzione. Prewash allows subsequent washing.

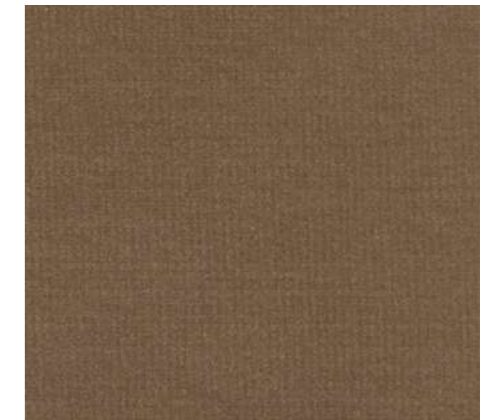
CLTKO_0716



VELLUTO 101 BIANCO



VELLUTO 102 CREMA



VELLUTO 103 CAMMELLO



VELLUTO 104 MORO



VELLUTO 105 SABBIA



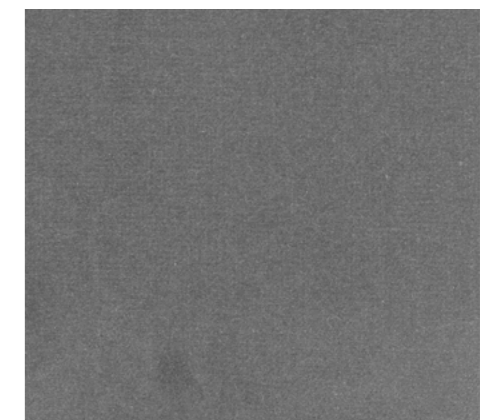
VELLUTO 106 CORDA



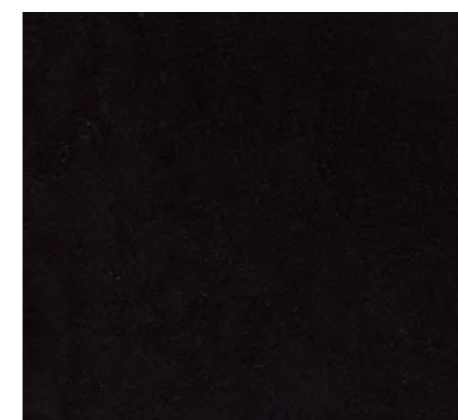
VELLUTO 107 TERRA



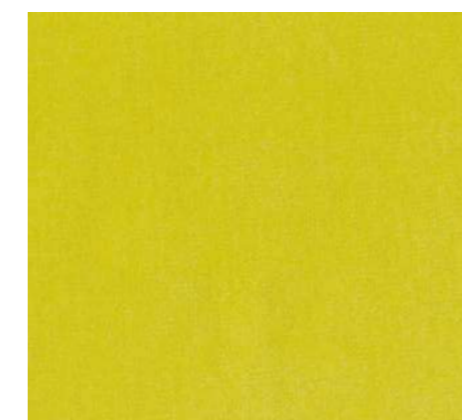
VELLUTO 108 PERLA



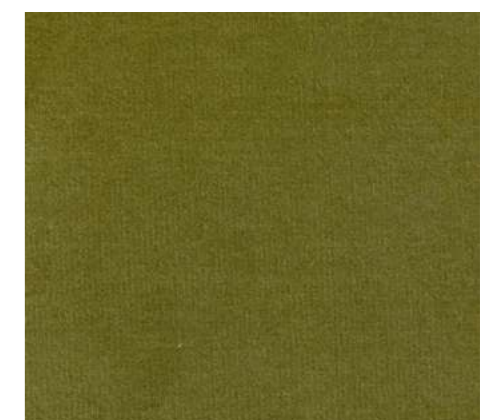
VELLUTO 109 GRIGIO



VELLUTO 110 ANTRACITE



VELLUTO 111 GIALLO



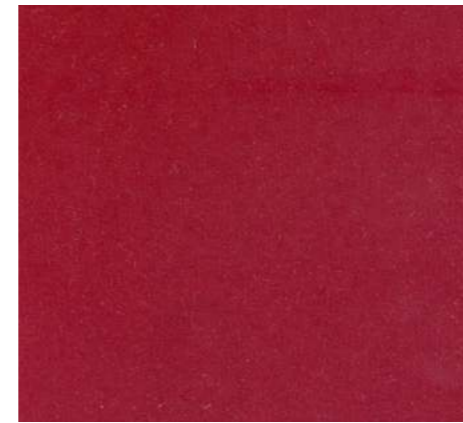
VELLUTO 112 VERDE



VELLUTO 113 ARANCIO



VELLUTO 114 SIENA



VELLUTO 115 ROSSO



VELLUTO 116 BORDEAUX



VELLUTO 117 VIOLA



VELLUTO 118 BLU



VELLUTO 119 ZAFFIRO



VELLUTO 120 OCEAN

Nome Name	VELLUTO
Categoria Category	G
H. pezza (cm) Roll height (cm)	140
Peso (gr/mtl) Weight (gr/mtl)	728
Abrasion (giri) Abrasion (giri)	80.000
Composizione Composition	100%CO
Manutenzione Maintenance	
Note Notes	

CLVLO_0714



SHERPA 01 BIANCO



SHERPA 02 CORDA



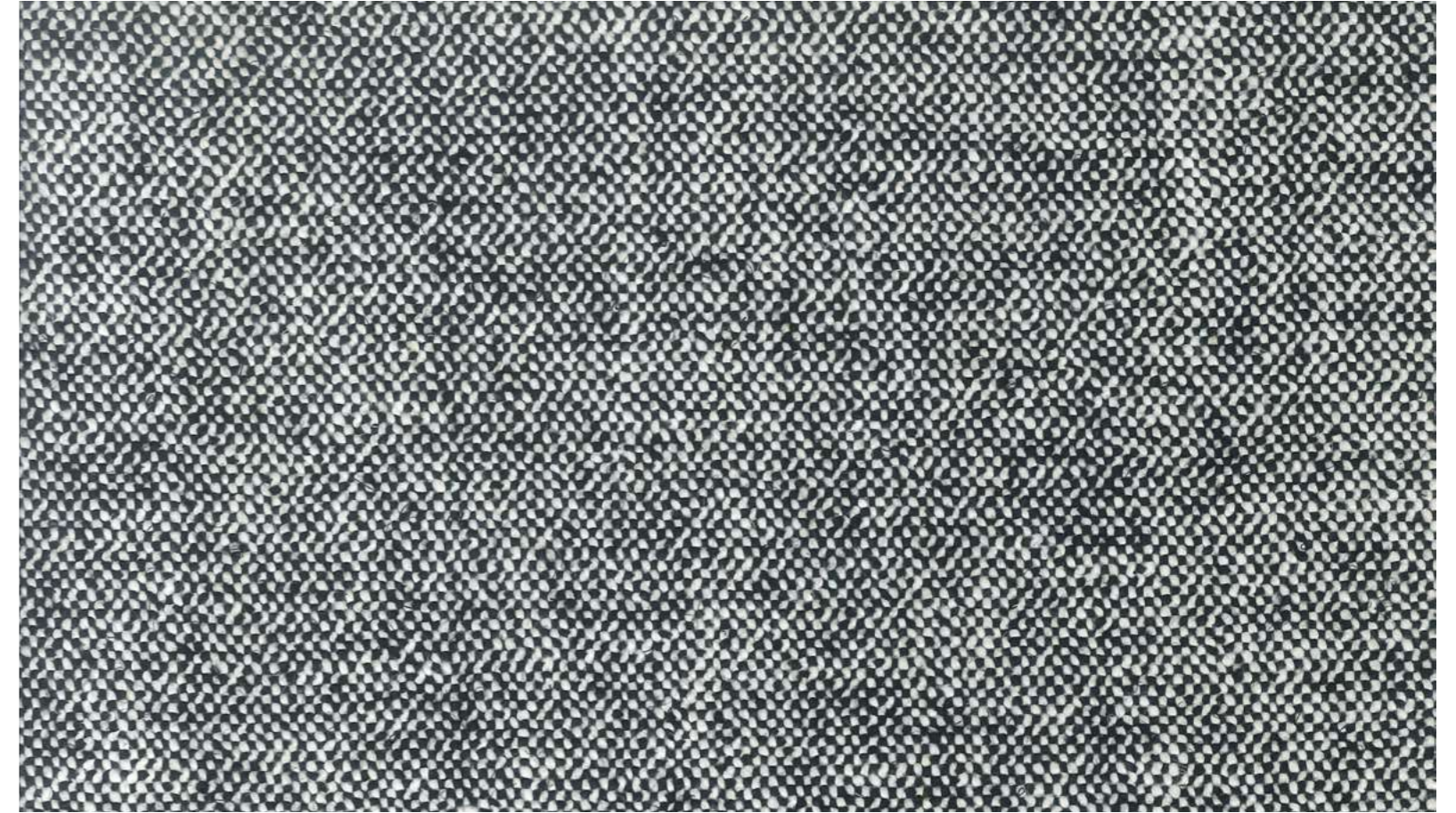
SHERPA 21 ANTRACITE



HILLS 08 NATUR



HILLS 06 ANTRACITE



ENGLAND 03



GLEN 01

Nome <i>Name</i>	SHERPA
Categoria <i>Category</i>	H
H. pezza (cm) <i>Roll height (cm)</i>	140
Peso (gr/mtl) <i>Weight (gr/mtl)</i>	1.316
Abrasione (giri) <i>Abrasion (giri)</i>	50.000
Composizione <i>Composition</i>	34%VI 33%PC 17%WO 8%PL 4%LI 4%CO
Manutenzione <i>Maintenance</i>	
Note <i>Notes</i>	

CLSP0_0419

Nome <i>Name</i>	HILLS
Categoria <i>Category</i>	Top
H. pezza (cm) <i>Roll height (cm)</i>	148
Peso (gr/mtl) <i>Weight (gr/mtl)</i>	953
Abrasione (giri) <i>Abrasion (giri)</i>	40.000
Composizione <i>Composition</i>	100%PL
Manutenzione <i>Maintenance</i>	
Note <i>Notes</i>	

CLHLO_0419

Nome <i>Name</i>	ENGLAND
Categoria <i>Category</i>	H
H. pezza (cm) <i>Roll height (cm)</i>	140
Peso (gr/mtl) <i>Weight (gr/mtl)</i>	854
Abrasione (giri) <i>Abrasion (giri)</i>	35.000
Composizione <i>Composition</i>	83%LI 17%CO
Manutenzione <i>Maintenance</i>	
Note <i>Notes</i>	

CLEGO_0419

Nome <i>Name</i>	GLEN
Categoria <i>Category</i>	G
H. pezza (cm) <i>Roll height (cm)</i>	140
Peso (gr/mtl) <i>Weight (gr/mtl)</i>	600
Abrasione (giri) <i>Abrasion (giri)</i>	20.000
Composizione <i>Composition</i>	30%VI 30%CO 24%PL 16%PC
Manutenzione <i>Maintenance</i>	
Note <i>Notes</i>	

CLGNLO_0419



BOSTON 114 PERLA



BOSTON 106 BEIGE



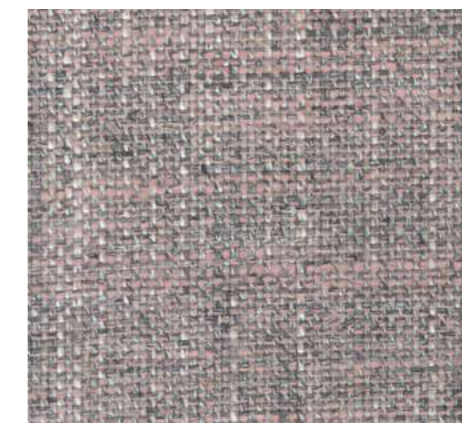
BOSTON 111 VERDE



BOSTON 112 ARANCIO



BOSTON 103 MARRON



BOSTON 101 ROSA



BOSTON 105 ARGENTO



BOSTON 107 MENTA



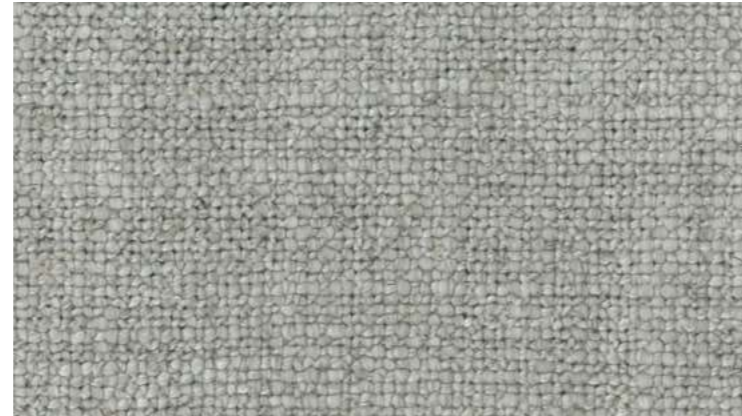
BOSTON 108 TURCHESE



BOSTON 109 DENIM



BALTIMORA 210 NATUR



BALTIMORA 212 CORDA



BALTIMORA 227 ARGILLA



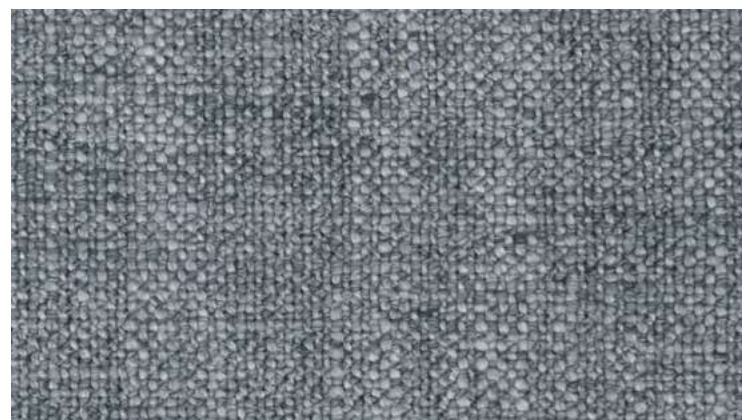
BALTIMORA 225 RUGGINE



BALTIMORA 204 BRONZO



BALTIMORA 215 ROSA



BALTIMORA 218 ARGENTO



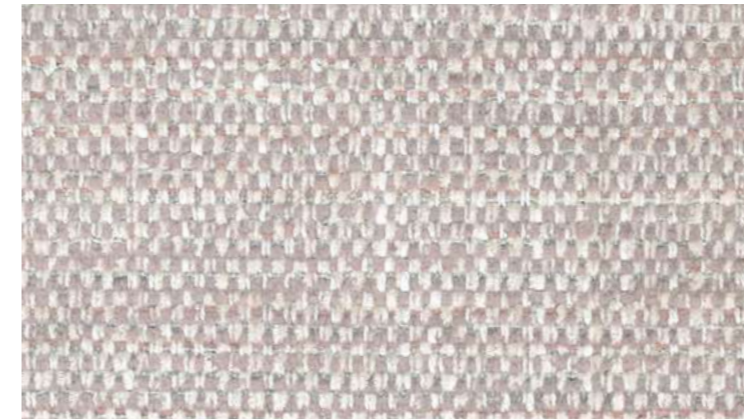
BALTIMORA 203 CIANITE



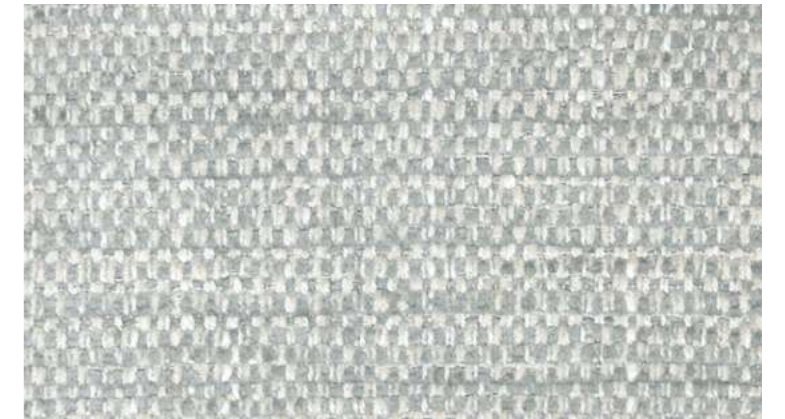
MIAMI 303 NATUR



MIAMI 309 CORDA



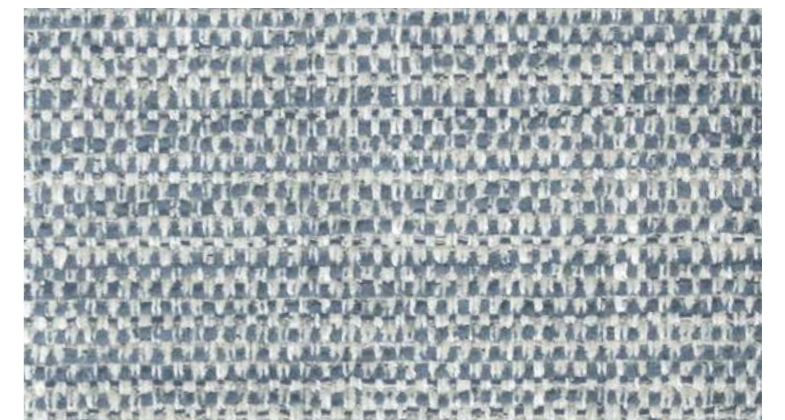
MIAMI 327 CIPRIA



MIAMI 310 PERLA



MIAMI 301 MENTA



MIAMI 322 BLU

Nome <i>Name</i>	BOSTON
Categoria <i>Category</i>	E
H. pezza (cm) <i>Roll height (cm)</i>	140
Peso (gr/mtl) <i>Weight (gr/mtl)</i>	540
Abrasione (giri) <i>Abrasion (giri)</i>	25.000
Composizione <i>Composition</i>	70%VI 30%LI
Manutenzione <i>Maintenance</i>	
Note <i>Notes</i>	

CLBTO_0418

Nome <i>Name</i>	BALTIMORA
Categoria <i>Category</i>	G
H. pezza (cm) <i>Roll height (cm)</i>	140
Peso (gr/mtl) <i>Weight (gr/mtl)</i>	990
Abrasione (giri) <i>Abrasion (giri)</i>	30.000
Composizione <i>Composition</i>	50%PC 23%LI 19%CO 8%NY
Manutenzione <i>Maintenance</i>	
Note <i>Notes</i>	

CLBTO_0418

Nome <i>Name</i>	MIAMI
Categoria <i>Category</i>	G
H. pezza (cm) <i>Roll height (cm)</i>	140
Peso (gr/mtl) <i>Weight (gr/mtl)</i>	1.080
Abrasione (giri) <i>Abrasion (giri)</i>	20.000
Composizione <i>Composition</i>	48%VI 34%CO 10%PL 5%LI 3%PC
Manutenzione <i>Maintenance</i>	
Note <i>Notes</i>	

CLMMO_0418



ÉLITE FIAM 01 PERLA



ÉLITE UNI 11 PERLA



ÉLITE SPIN 21 PERLA



ÉLITE FIAM 02 NATUR



ÉLITE UNI 12 NATUR



ÉLITE SPIN 22 natur



ÉLITE FIAM 03 MARRON



ÉLITE UNI 13 MARRON



ÉLITE SPIN 23 MARRON



ÉLITE DIS 34 MARRON

Nome <i>Name</i>	ÉLITE FIAM
Categoria <i>Category</i>	E
H. pezza (cm) <i>Roll height (cm)</i>	140
Peso (gr/mtl) <i>Weight (gr/mtl)</i>	750
Abrasione (giri) <i>Abrasion (giri)</i>	20.000
Composizione <i>Composition</i>	55%VI 25%CO 10%LI 7%PL 3%PC
Manutenzione <i>Maintenance</i>	
Note <i>Notes</i>	

CLEFO_0415

Nome <i>Name</i>	ÉLITE UNI
Categoria <i>Category</i>	F
H. pezza (cm) <i>Roll height (cm)</i>	140
Peso (gr/mtl) <i>Weight (gr/mtl)</i>	950
Abrasione (giri) <i>Abrasion (giri)</i>	20.000
Composizione <i>Composition</i>	55%VI 25%CO 10%LI 7%PL 3%PC
Manutenzione <i>Maintenance</i>	
Note <i>Notes</i>	

CLEUO_0415

Nome <i>Name</i>	ÉLITE SPIN
Categoria <i>Category</i>	F
H. pezza (cm) <i>Roll height (cm)</i>	140
Peso (gr/mtl) <i>Weight (gr/mtl)</i>	950
Abrasione (giri) <i>Abrasion (giri)</i>	20.000
Composizione <i>Composition</i>	55%VI 25%CO 10%LI 7%PL 3%PC
Manutenzione <i>Maintenance</i>	
Note <i>Notes</i>	

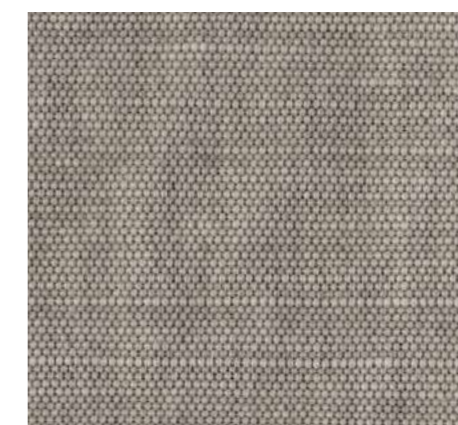
CLES0_0415

Nome <i>Name</i>	ÉLITE DIS
Categoria <i>Category</i>	G
H. pezza (cm) <i>Roll height (cm)</i>	140
Peso (gr/mtl) <i>Weight (gr/mtl)</i>	820
Abrasione (giri) <i>Abrasion (giri)</i>	20.000
Composizione <i>Composition</i>	59%CO 31%VI 6%LI 4%PC
Manutenzione <i>Maintenance</i>	
Note <i>Notes</i>	

CLEDO_0415



DEEP 02 NATUR



DEEP 03 SACCO



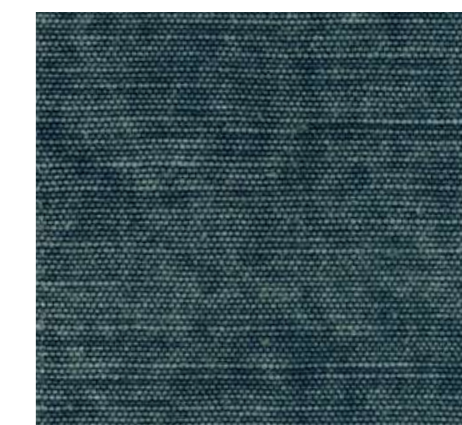
DEEP 17 OCRA



DEEP 18 ROSSO



DEEP 15 PRATO



DEEP 14 MARINA



DEEP 16 LIME



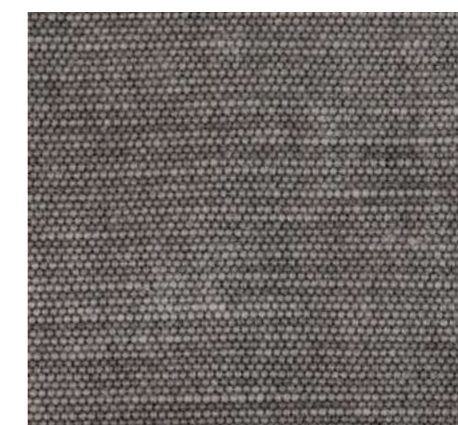
DEEP 08 AZZURRO



DEEP 09 BLU



DEEP 13 MELANZANA



DEEP 10 GRIGIO



DEEP 06 ANTRACITE




TERRANOVA 03 NATUR





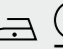


TERRANOVA 02 LIME



TERRANOVA 01 BLU

Nome Name	DEEP
Categoria Category	G
H. pezza (cm) Roll height (cm)	140
Peso (gr/mtl) Weight (gr/mtl)	700
Abrasione (giri) Abrasion (giri)	22.000
Composizione Composition	60%CO 40%LI
Manutenzione Maintenance	    
Note Notes	<p>Tessuto caratterizzato da un aspetto vissuto, scolorito e stropicciato. The fabric looks faded and crumpled, as feature.</p> <p>Il prelavaggio permette la manutenzione.  Prewash allows subsequent washing.</p>

CLDP0_0714

Nome Name	TERRANOVA
Categoria Category	H
H. pezza (cm) Roll height (cm)	140
Peso (gr/mtl) Weight (gr/mtl)	896
Abrasione (giri) Abrasion (giri)	13.000
Composizione Composition	51%VI 35%CO 14%LI
Manutenzione Maintenance	    
Note Notes	

CLTRO_0714



SANCHI 502

Nome <i>Name</i>	SANCHI
Categoria <i>Category</i>	H
H. pezza (cm) <i>Roll height (cm)</i>	140
Peso (gr/mtl) <i>Weight (gr/mtl)</i>	709
Abrasione (giri) <i>Abrasion (giri)</i>	20.000
Composizione <i>Composition</i>	70%VI 30%LI
Manutenzione <i>Maintenance</i>	
Note <i>Notes</i>	

CLSC0_0418



VEGAS 04 BIANCO



VEGAS 06 PERLA



VEGAS 01 SABBIA



VEGAS 12 DUNA



VEGAS 39 MARRON



VEGAS 45 MORO



VEGAS 20 ROSA



VEGAS 38 MELANZANA



VEGAS 47 BORDEAUX



VEGAS 02 SOLAR



VEGAS 41 OCRA



VEGAS 48 MUSCHIO



VEGAS 33 OTTANIO



VEGAS 34 PETROLIO



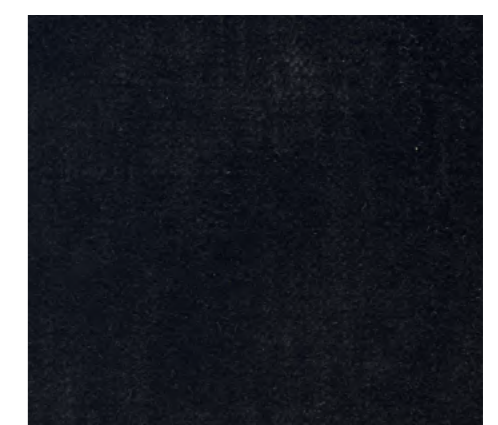
VEGAS 14 AZZURRO



VEGAS 16 GRIGIO



VEGAS 44 ANTRACITE



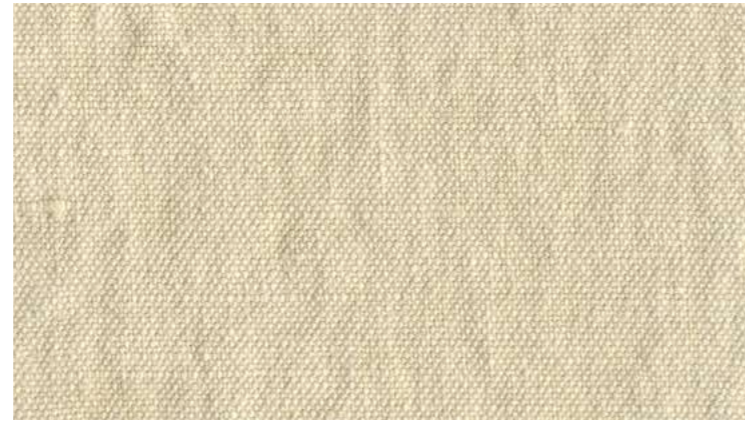
VEGAS 49 NERO

Nome Name	VEGAS
Categoria Category	G
H. pezza (cm) Roll height (cm)	140
Peso (gr/mtl) Weight (gr/mtl)	780
Abrasione (giri) Abrasion (giri)	50.000
Composizione Composition	55%VI 45%CO
Manutenzione Maintenance	
Note Notes	

CLVGO_0714



ZEUS 34 BIANCO



ZEUS 01 AVORIO



ZEUS 02 SABBIA



ZEUS 05 MARRON



ZEUS 04 TERRA



ZEUS 06 DUNA



ZEUS 07 OCRA



ZEUS 08 MATTONE



ZEUS 26 MORO



ZEUS 25 MUSCHIO



ZEUS 24 ROSA



ZEUS 23 MALVA



ZEUS 27 BAROLO



ZEUS 15 CELESTE



ZEUS 17 MARINA



ZEUS 20 BLU



ZEUS 18 OCEAN



ZEUS 29 PERLA



ZEUS 44 CORDA



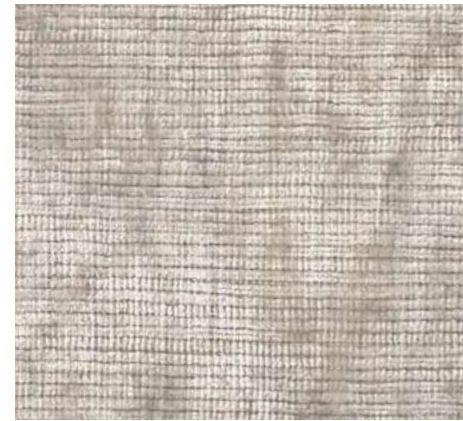
ZEUS 38 GRAFITE



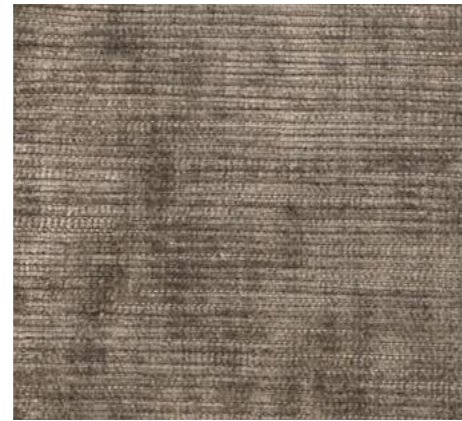
PLAZA 31 NEVE



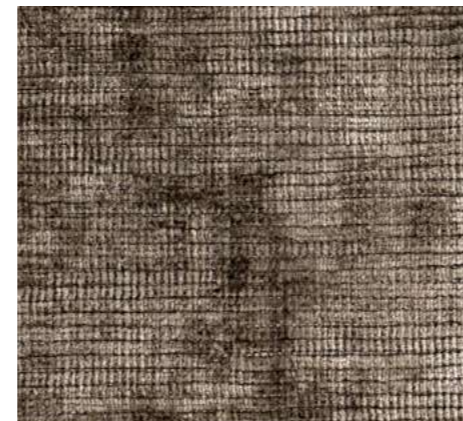
PLAZA 01 LATTE



PLAZA 03 BEIGE



PLAZA 05 SACCO



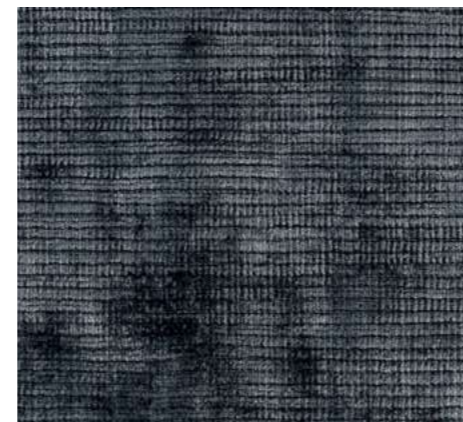
PLAZA 54 VISONE



PLAZA 18 ARGILLA



PLAZA 10 MENTA



PLAZA 15 OTTANIO



PLAZA 52 MUSCHIO



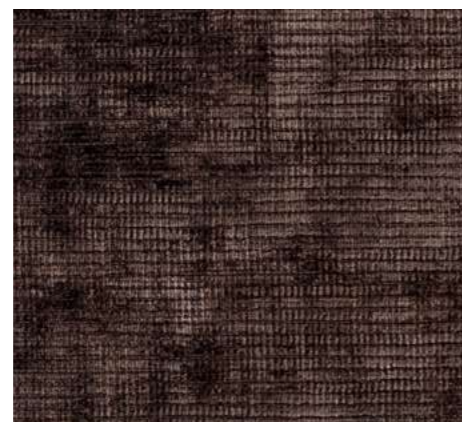
PLAZA 53 BRUNO



PLAZA 12 CICLAMINO



PLAZA 50 BORDEAUX



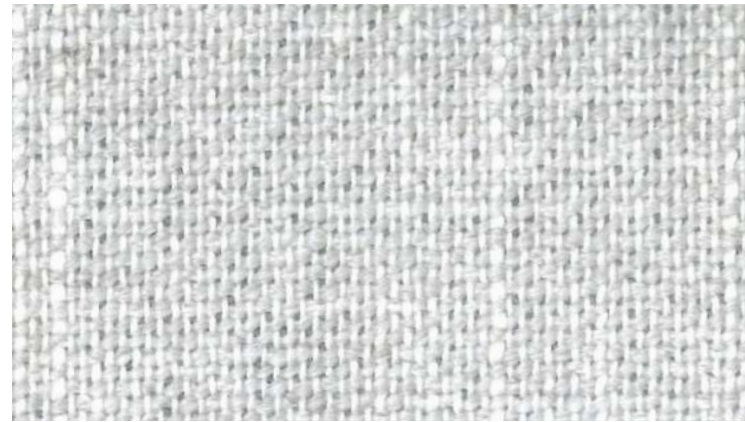
PLAZA 30 TERRA

Nome Name	ZEUS
Categoria Category	E
H. pezza (cm) Roll height (cm)	140
Peso (gr/mtl) Weight (gr/mtl)	680
Abrasione (giri) Abrasion (giri)	30.000
Composizione Composition	100%LI
Manutenzione Maintenance	
Note Notes	Tessuto caratterizzato da un aspetto vissuto, scolorito e stropicciato. The fabric looks faded and crumpled, as feature.

CLZSO_0716

Nome Name	PLAZA
Categoria Category	G
H. pezza (cm) Roll height (cm)	140
Peso (gr/mtl) Weight (gr/mtl)	800
Abrasione (giri) Abrasion (giri)	35.000
Composizione Composition	70%CO 30%VI
Manutenzione Maintenance	
Note Notes	

CLPZO_0714



ERENIK 10 BIANCO



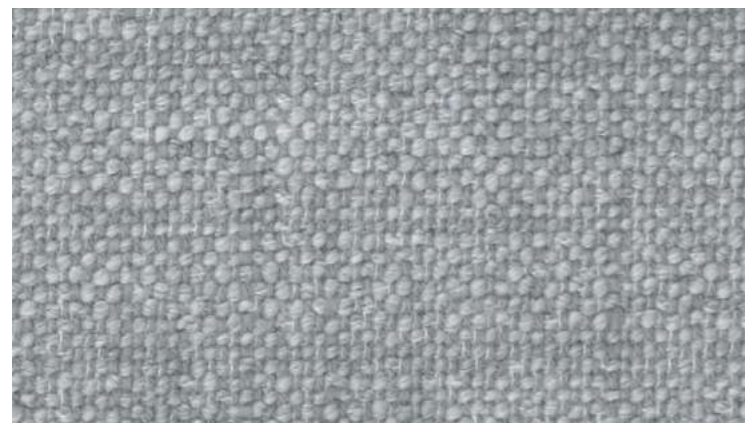
ERENIK 11 NATUR



ERENIK 12 SACCO



ERENIK 13 MARRON



ERENIK 14 GRIGIO



ERENIK 15 ANTRACITE



TRIGNO 20 BIANCO



TRIGNO 21 NATUR



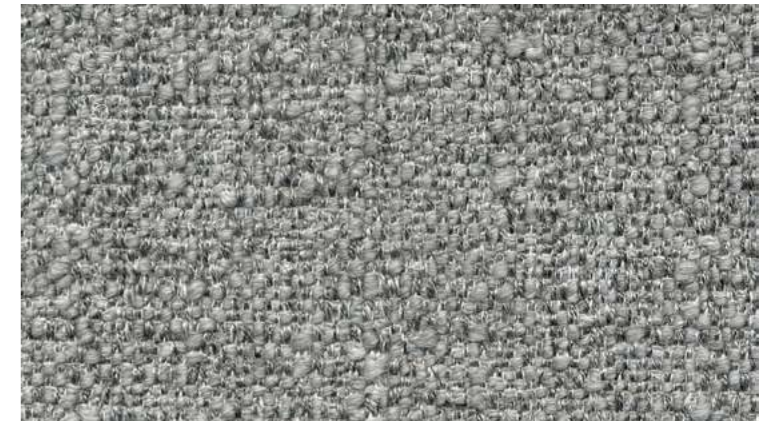
TRIGNO 22 SACCO



TRIGNO 23 TERRA



TRIGNO 24 PERLA



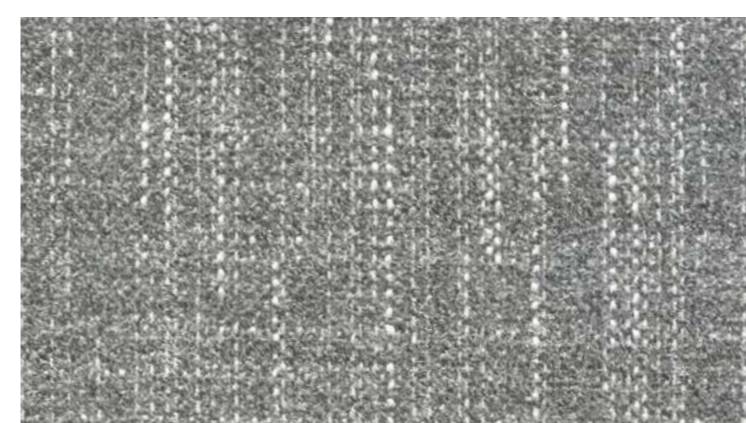
TRIGNO 25 GRIGIO



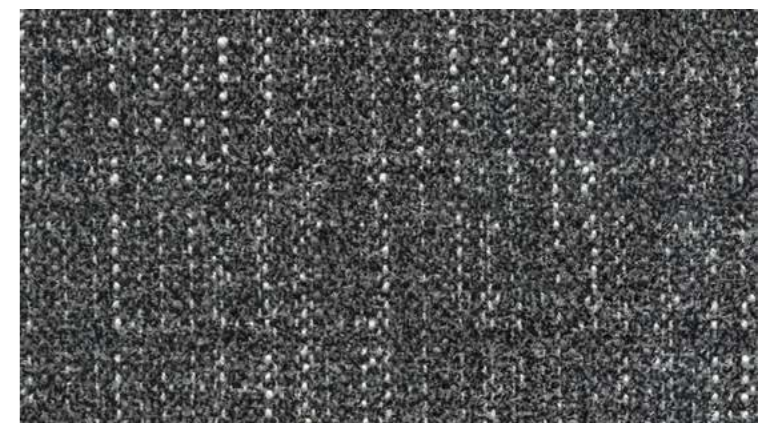
DOMMEL 30 PERLA



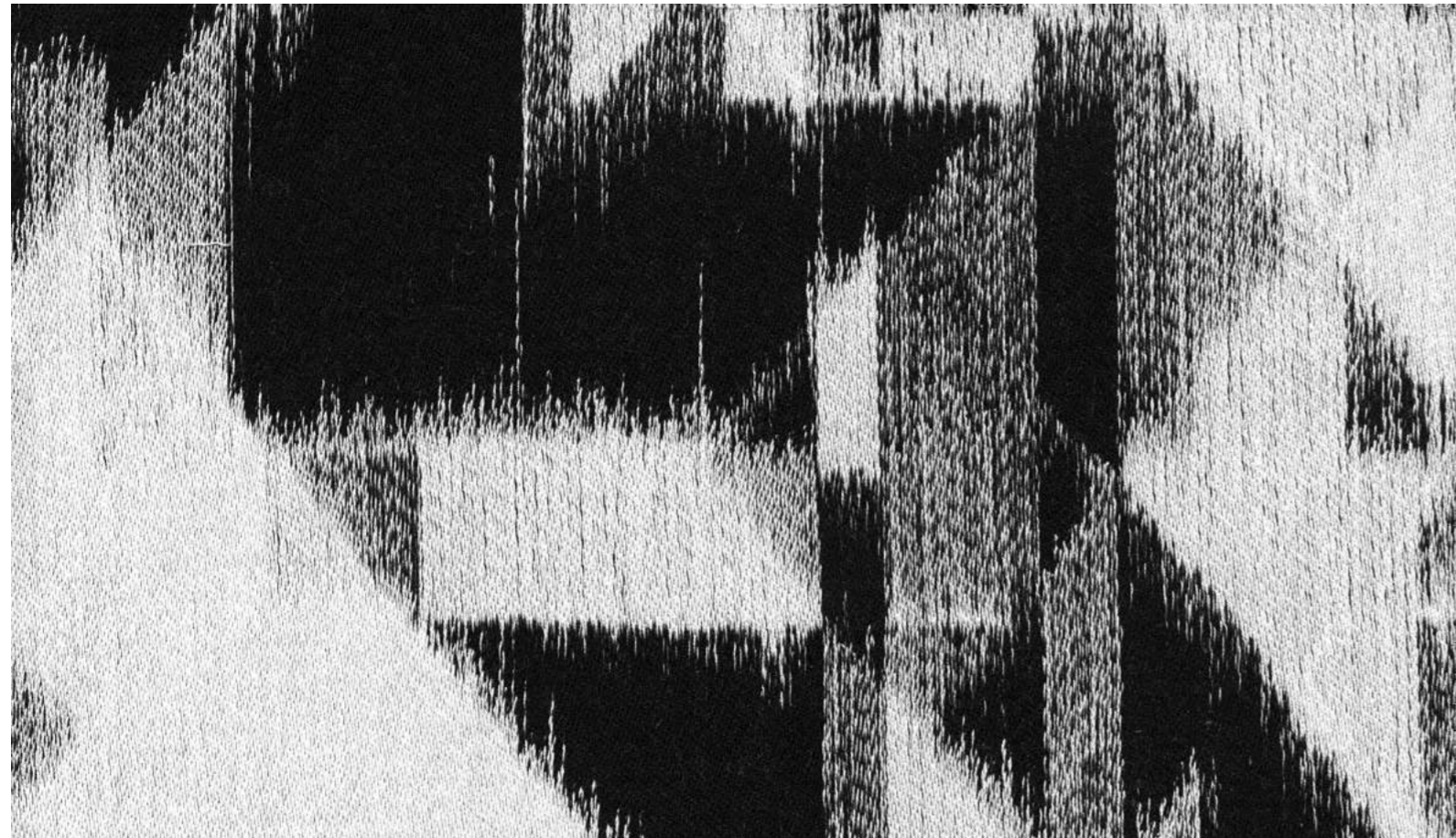
DOMMEL 32 TABACCO



DOMMEL 31 GRIGIO



DOMMEL 33 NERO



FULDA 40

Nome Name	ERENIK
Categoria Category	F
H. pezza (cm) Roll height (cm)	140
Peso (gr/mtl) Weight (gr/mtl)	860
Abrasione (giri) Abrasion (giri)	30.000
Composizione Composition	30%PL 28%PC 21%VI 12%CO 9%LI
Manutenzione Maintenance	
Note Notes	

CLER0_0417

Nome Name	TRIGNO
Categoria Category	F
H. pezza (cm) Roll height (cm)	140
Peso (gr/mtl) Weight (gr/mtl)	920
Abrasione (giri) Abrasion (giri)	31.000
Composizione Composition	33%PL 28%PC 24%VI 9%LI 6%CO
Manutenzione Maintenance	
Note Notes	

CLTGO_0417

Nome Name	DOMMEL
Categoria Category	F
H. pezza (cm) Roll height (cm)	140
Peso (gr/mtl) Weight (gr/mtl)	900
Abrasione (giri) Abrasion (giri)	35.000
Composizione Composition	61%VI 14%CO 10%LI 10%PL 5%PC
Manutenzione Maintenance	
Note Notes	

CLDM0_0417

Nome Name	FULDA
Categoria Category	F
H. pezza (cm) Roll height (cm)	140
Peso (gr/mtl) Weight (gr/mtl)	505
Abrasione (giri) Abrasion (giri)	5.000
Composizione Composition	70%CO 15%WO 15%PC
Manutenzione Maintenance	
Note Notes	Tessuto da utilizzare solo per cuscini arreda. Fabric to use only for arreda cushions.

CLFLO_0417



MOLESKIN 30 BIANCO



MOLESKIN 16 PERLA



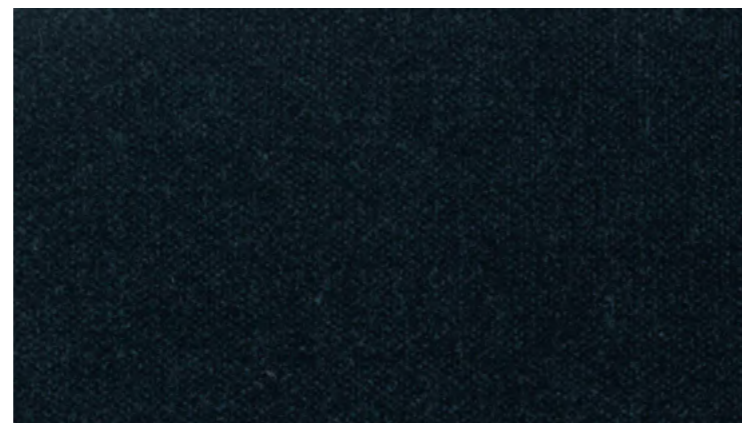
MOLESKIN 18 NATUR



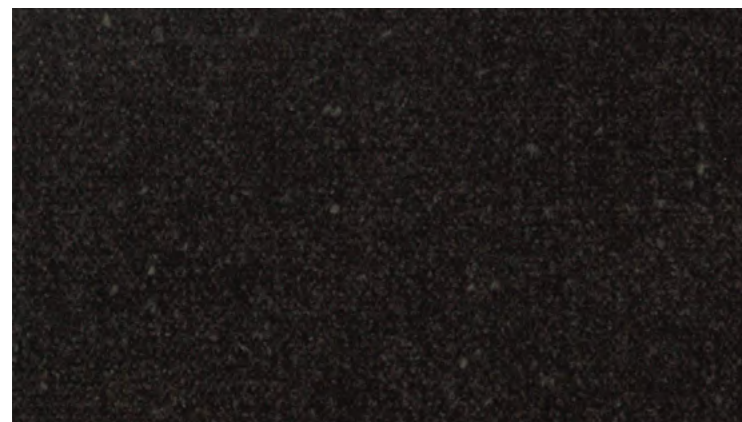
MOLESKIN 07 GRIGIO



MOLESKIN 32 BAROLO



MOLESKIN 25 PETROLIO



MOLESKIN 08 TERRA



MOLESKIN 21 ANTRACITE



MELUN 01

Nome Name	MOLESKIN
Categoria Category	G
H. pezza (cm) Roll height (cm)	140
Peso (gr/mtl) Weight (gr/mtl)	920
Abrasione (giri) Abrasion (giri)	30.000
Composizione Composition	32%PC 29%CO 10%LI 26%VI 3%PL
Manutenzione Maintenance	
Note Notes	

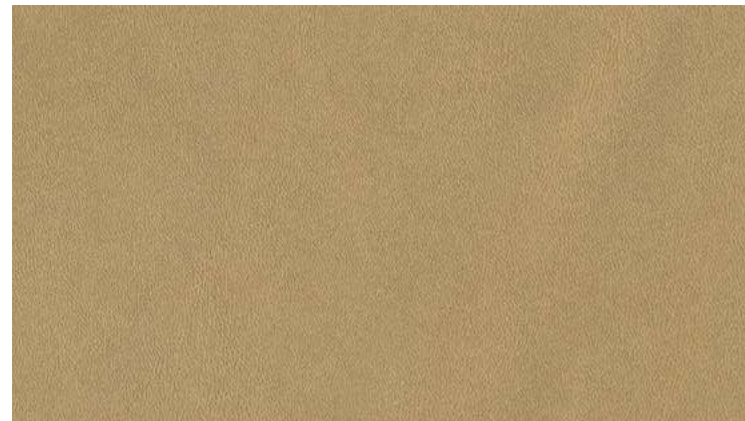
CLMS0_0419

Nome Name	MELUN
Categoria Category	H
H. pezza (cm) Roll height (cm)	140
Peso (gr/mtl) Weight (gr/mtl)	1.043
Abrasione (giri) Abrasion (giri)	15.000
Composizione Composition	39%VI 18%PL 17%PC 15%WV 11%CO
Manutenzione Maintenance	
Note Notes	

CLML0_0419



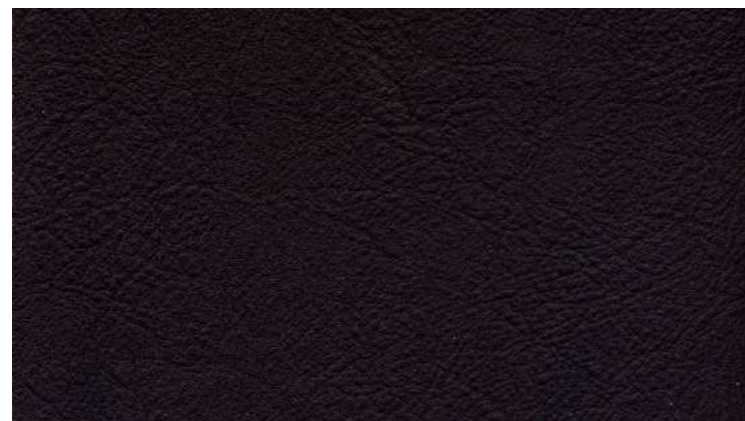
CIELO 02 AVORIO



CIELO 01 SABBIA



CIELO 05 DUNA



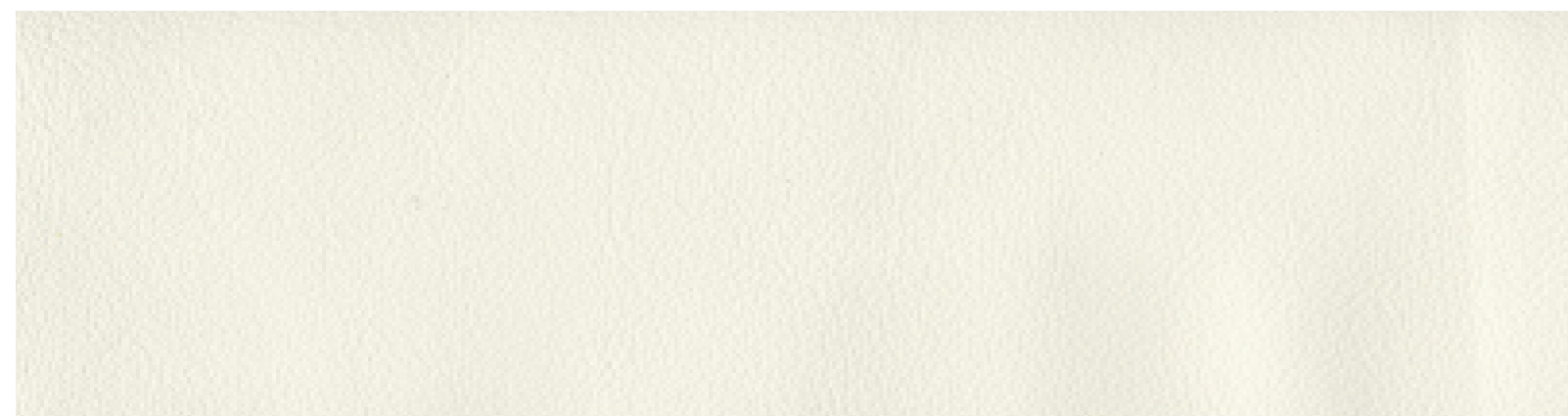
CIELO 10 MORO



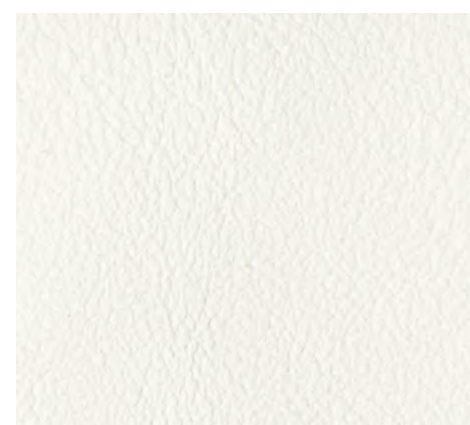
CIELO 30 NERO

Nome <i>Name</i>	CIELO
Categoria <i>Category</i>	Pelle Y
Pelle <i>Leather</i>	Bovina europea. ANILINA con grana naturale. <i>European cattle. ANILINE with natural grain.</i>
Spessore (mm) <i>Thickness (mm)</i>	1.2 - 1.4
Concia <i>Tanning</i>	Al cromo <i>Chrome</i>
Tintura <i>Dyeing</i>	Passante <i>Permeable</i>
Rifinitone <i>Finishing</i>	Esente <i>None</i>
Note <i>Notes</i>	Presenta lievi imperfezioni, venature e un diverso grado di lucentezza e tonalità, a garanzia di un prodotto con caratteristiche naturali di pregio. <i>It show slight imperfections, veining and various degrees of shine and shades. All this is a guarantee of the naturalness of the product.</i>

CLCLO_0714



FASHION 2000 BIANCO



FASHION 2024 NEVE



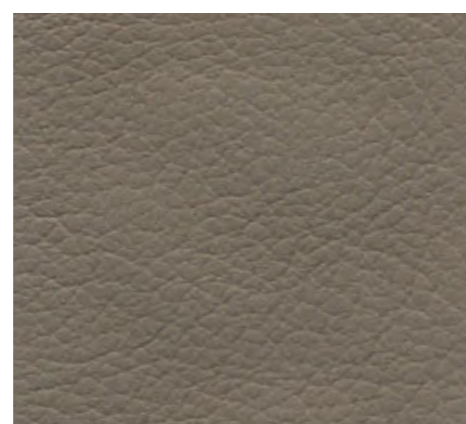
FASHION 2025 ECRU



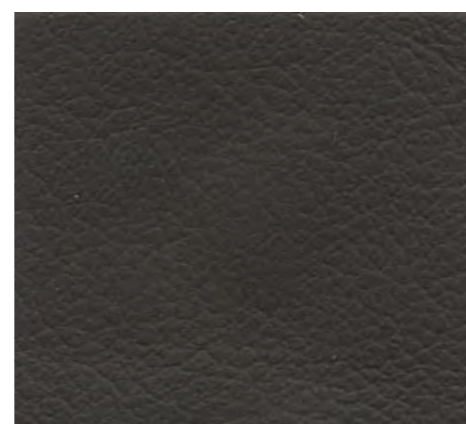
FASHION 2026 SABBIA



FASHION 2060 CAPPUCCINO



FASHION 2045 ARGILLA



FASHION 2061 TERRA



FASHION 2010 CUIOIO



FASHION 2011 AVANA



FASHION 2062 BRUNO



FASHION 2021 MANDARINO



FASHION 2007 ROSSO



FASHION 2008 BAROLO



FASHION 2009 MOSTO



FASHION 2005 OCRA



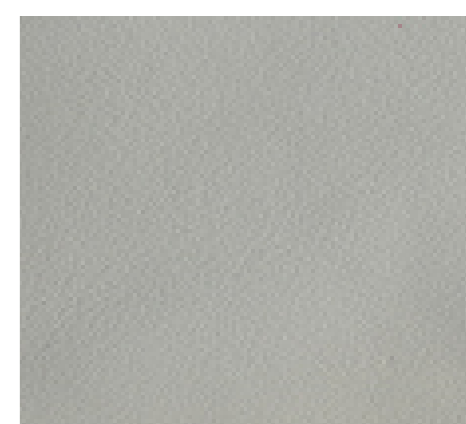
FASHION 2070 MELA



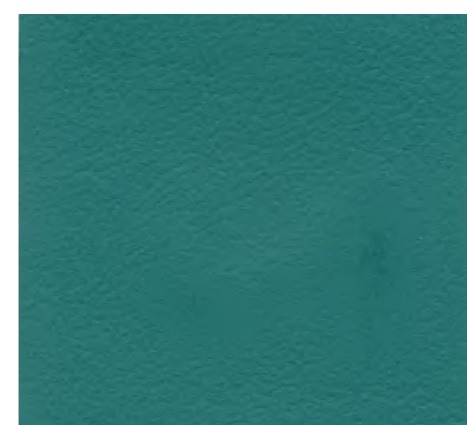
FASHION 2071 BAMBÙ



FASHION 2072 OLIVA



FASHION 2019 PERLA



FASHION 2080 SMERALDO



FASHION 2081 AVIO



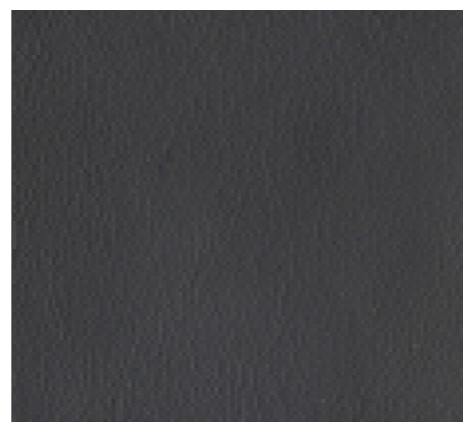
FASHION 2012 BLU



FASHION 2037 NAVY



FASHION 2090 PELTRO



FASHION 2015 SMOG



FASHION 2018 NERO

Nome **FASHION**

Categoria **Pelle W**

Pelle Bovina europea. FIORE CORRETTO.
Leather European cattle. CORRECTED GRAIN LEATHER.

Spessore (mm) **1.2 - 1.3**
Thickness (mm)

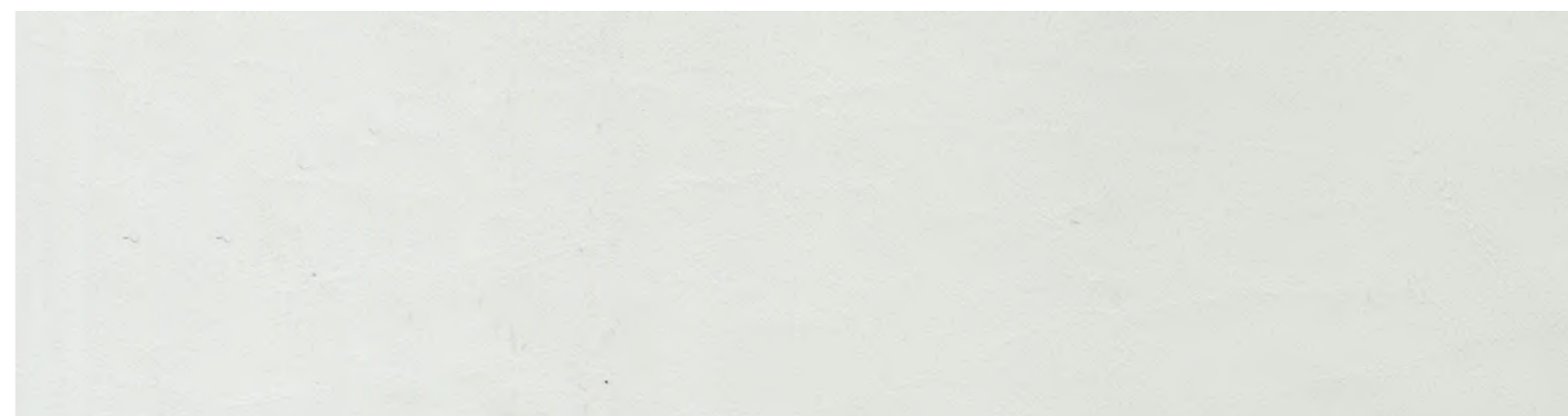
Concia **Al cromo**
Tanning Chrome

Tintura **Passante**
Dyeing Permeable

Rifinitura **Resina all'acqua**
Finishing Water bases resin

Note

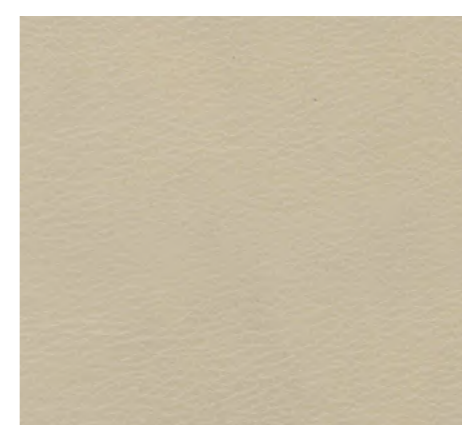
CLFH0_0714



LUXURY 883 AVORIO



LUXURY 834 BEIGE



LUXURY 823 SABBIA



LUXURY 825 ARGILLA



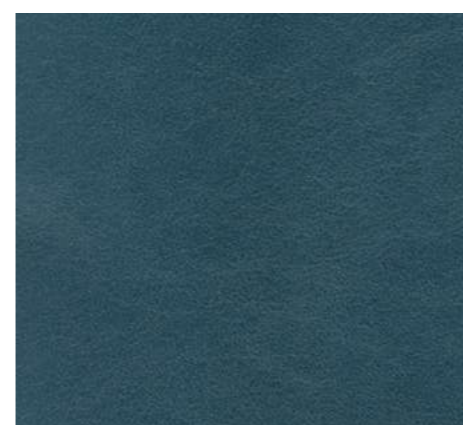
LUXURY 811 MORO



LUXURY 802 BORDEAUX



LUXURY 819 OCRA



LUXURY 829 OTTANIO



LUXURY 832 OCEAN



LUXURY 807 NERO

Nome <i>Name</i>	LUXURY
Categoria <i>Category</i>	Pelle Y
Pelle <i>Leather</i>	Bovina europea. PIENO FIORE con grana naturale. <i>European cattle. FULL GRAIN leather with natural grain.</i>
Spessore (mm) <i>Thickness (mm)</i>	0.9 - 1.1
Concia <i>Tanning</i>	Minerale e vegetale <i>Mineral and vegetal</i>
Tintura <i>Dyeing</i>	Passante <i>Permeable</i>
Rifinitura <i>Finishing</i>	Con oli, cere naturali e resine. <i>With oils, natural waxes and resins.</i>
Note <i>Notes</i>	Presenta lievi imperfezioni, venature e un diverso grado di lucentezza e tonalità, a garanzia di un prodotto con caratteristiche naturali di pregio. <i>It show slight imperfections, veining and various degrees of shine and shades. All this is a guarantee of the naturalness of the product.</i>

CLLX0_0418



NABUK 05 SABBIA



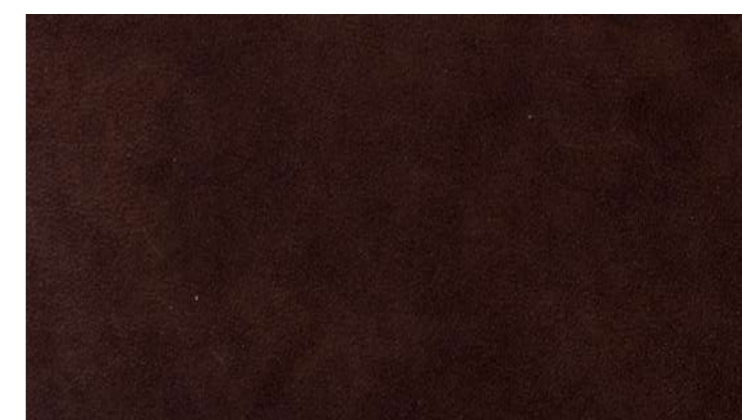
NABUK 03 AVORIO



NABUK 09 SEPPIA



NABUK 16 ARGILLA



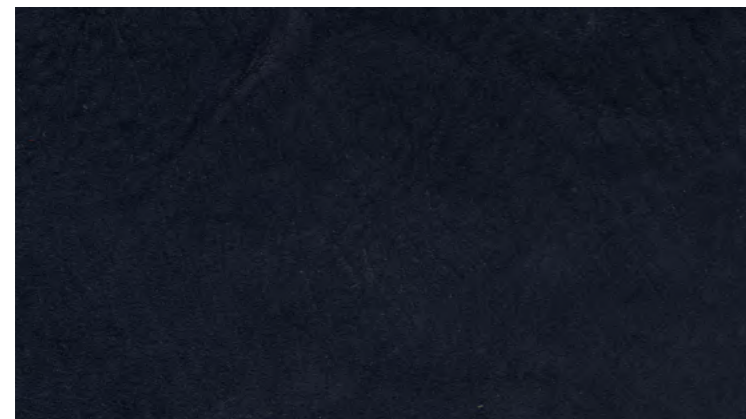
NABUK 07 MORO



NABUK 40 OCRA



NABUK 41 BAROLO



NABUK 37 OCEAN

Nome **NABUK**
Name

Categoria **Pelle Z**
Category

Pelle *Leather* Bovina europea. NABUK con grana naturale.
European cattle. NABUK with natural grain.

Spessore (mm) **1.1 - 1.3**
Thickness (mm)

Concia **Al cromo**
Tanning *Chrome*

Tintura **Passante**
Dyeing *Permeable*

Rifinitone **Esente**
Finishing *None*

Note *Notes* Presenta lievi imperfezioni, venature e un diverso grado di lucentezza e tonalità, a garanzia di un prodotto con caratteristiche naturali di pregio.
It show slight imperfections, veining and various degrees of shine and shades. All this is a guarantee of the naturalness of the product.

CLNB0_0714



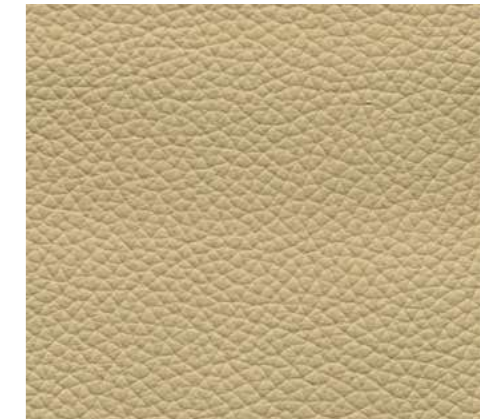
NAVA 5220 MOSTO



NAVA 5000 BIANCO



NAVA 5480 BEIGE



NAVA 5020 CREMA



NAVA 5500 MATTONE



NAVA 5100 MARRON



NAVA 5270 MORO



NAVA 5360 ARANCIO



NAVA 5370 ROSSO



NAVA 5450 FUCSIA



NAVA 5210 BAROLO



NAVA 5140 VERDE



NAVA 5150 BOSCO



NAVA 5240 ZAFFIRO



NAVA 5250 BLU



NAVA 5290 ANTRACITE



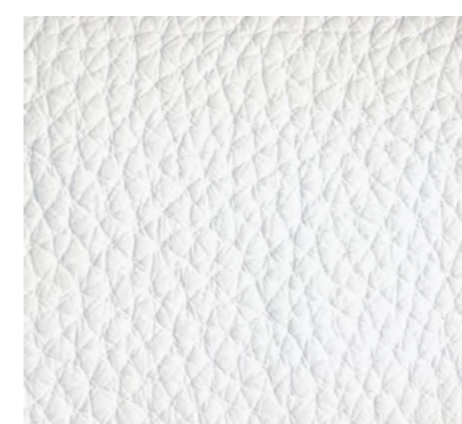
NAVA 5300 NERO

Nome <i>Name</i>	NAVA
Categoria <i>Category</i>	Pelle K
Pelle <i>Leather</i>	Bovina europea. FIORE CORRETTO. <i>European cattle. CORRECTED GRAIN LEATHER.</i>
Spessore (mm) <i>Thickness (mm)</i>	1.0 - 1.2
Concia <i>Tanning</i>	Al cromo <i>Chrome</i>
Tintura <i>Dyeing</i>	Passante <i>Permeable</i>
Rifinitura <i>Finishing</i>	Pigmenti all'acqua <i>Water bases pigments</i>
Note <i>Notes</i>	

CLNVO_0714



SELVA 7070 MORO



SELVA 7160 BIANCO



SELVA 7200 AVORIO



SELVA 7210 BEIGE



SELVA 7040 GIALLO



SELVA 7050 BISCOTTO



SELVA 7060 MARRON



SELVA 7090 SIENA



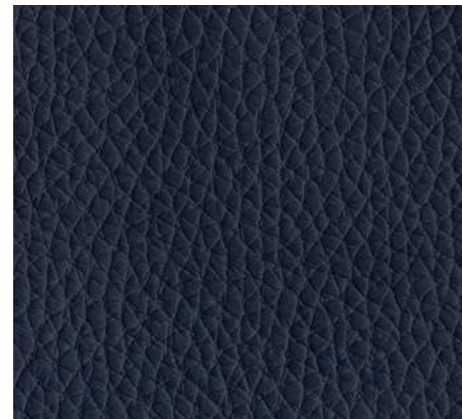
SELVA 7170 ROSSO



SELVA 7100 BORDEAUX



SELVA 7120 AVIO



SELVA 7130 OCEAN



SELVA 7150 NERO

Nome <i>Name</i>	SELVA
Categoria <i>Category</i>	Pelle K
Pelle <i>Leather</i>	Bovina europea. FIORE CORRETTO. <i>European cattle. CORRECTED GRAIN LEATHER.</i>
Spessore (mm) <i>Thickness (mm)</i>	1.4 - 1.6
Concia <i>Tanning</i>	Al cromo <i>Chrome</i>
Tintura <i>Dyeing</i>	Passante <i>Permeable</i>
Rifinitone <i>Finishing</i>	Pigmenti all'acqua <i>Water bases pigments</i>
Note <i>Notes</i>	

CLSLO_0714



SETANIL 550 BIANCO



SETANIL 580 ECRU



SETANIL 551 BEIGE



SETANIL 581 PERLA



SETANIL 582 CAPPUCCINO



SETANIL 583 MARRON



SETANIL 553 DUNA



SETANIL 559 MORO



SETANIL 584 MOSTO



SETANIL 563 BLU



SETANIL 562 NERO

Nome
Name **SETANIL**

Categoria
Category **Pelle Y**

Pelle
Leather Bovina europea. PIENO FIORE con grana naturale. European cattle. FULL GRAIN leather with natural grain.

Spessore (mm)
Thickness (mm) **1.4 - 1.6**

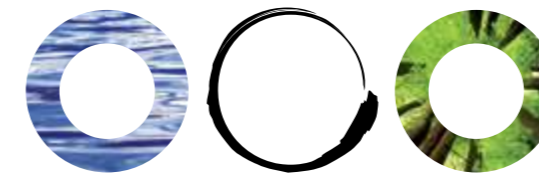
Concia
Tanning **Al cromo**
Chrome

Tintura
Dyeing **Passante**
Permeable

Rifinitone
Finishing **Poliuretani pregiati**
Fine polyurethanes

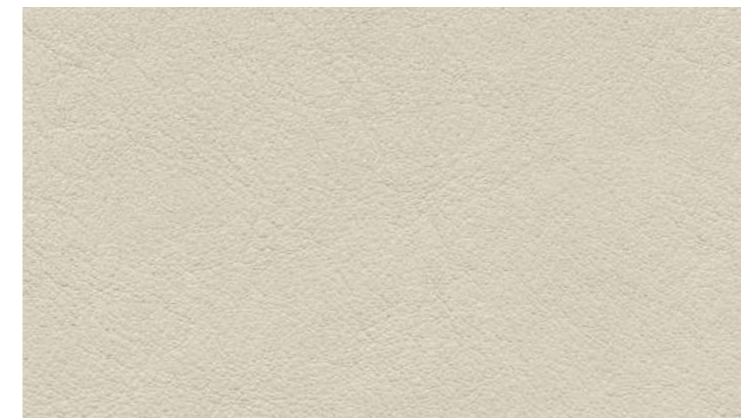
Note
Notes Presenta lievi imperfezioni, venature e un diverso grado di lucentezza e tonalità, a garanzia di un prodotto con caratteristiche naturali di pregio.
It show slight imperfections, veining and various degrees of shine and shades. All this is a guarantee of the naturalness of the product.

CLSN0_0714

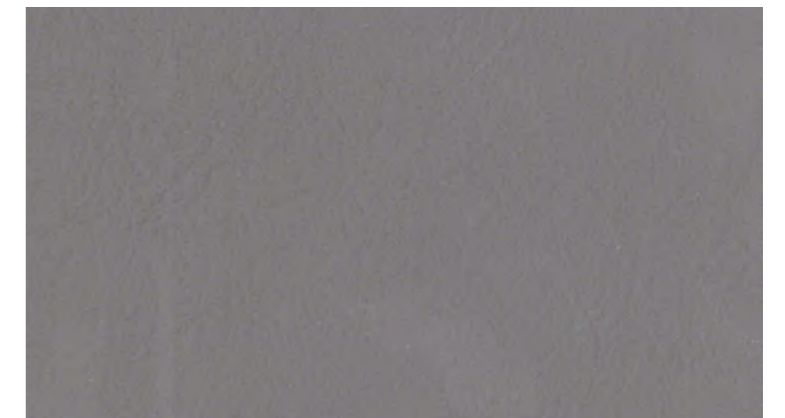


zero impact
SUSTAINABLE LEATHER BY DANI

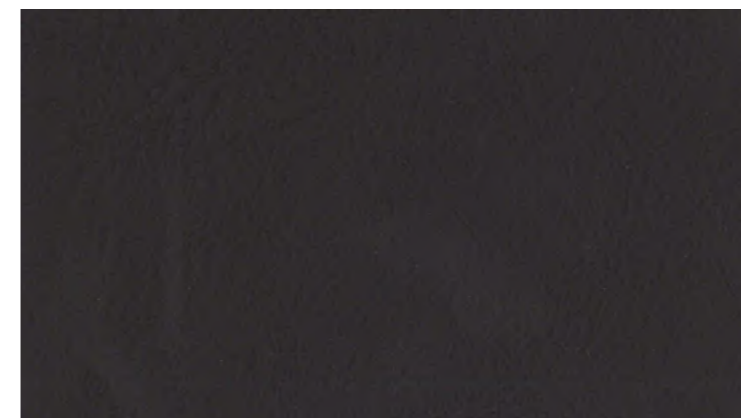
La pelle leggera per l'ambiente, chrome e heavy metal free, certificata ISO 15987. L'innovativo processo di lavorazione e l'intervento di rinfestazione certificato compensano totalmente la CO2 prodotta in fase di concia.



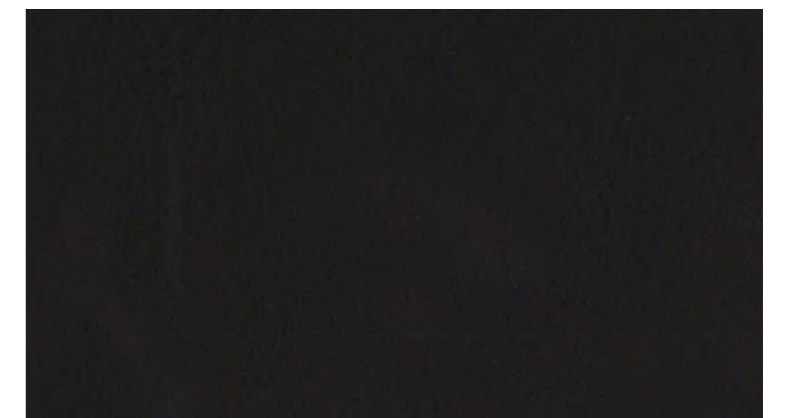
STELVIO 02 ECRU



STELVIO 04 ARGILLA



STELVIO 06 MORO



STELVIO 08 NERO

SPESSORE THICKNESS	1,4-1,6
TIPOLOGIA LEATHER TYPE	ANILINA - PIENO FIORE - TINTURA ALL'ANILINA PASSANTE IN BOTTE ANILINE - FULL GRAIN - THROUGH DYELING ANILINE
MATERIA PRIMA RAW MATERIAL	PELLE BOVINA DI ORIGINE EUROPEA EUROPEAN RAW HIDES
CONCIA TANNAGE	ESENTE CROMO ED ESENTE METALLI PESANTI CHROME-FREE AND HEAVY METAL-FREE

Proprietà / Property	ref. normativo / Test Method	prestazioni / Performance
----------------------	------------------------------	---------------------------

TEST SOLIDITÀ DEL COLORE / COLOR FASTNESS

SOLIDITÀ DEL COLORE ALLO STROFINIO A SECCO - 50 CICLI DRY RUB FASTNESS - 50 CYCLES	UNI EN ISO 11640	≥ 3 Scala dei Grigi / GREY SCALE
SOLIDITÀ DEL COLORE ALLO STROFINIO A UMIDO - 20 CICLI WET RUB FASTNESS - 20 CYCLES	UNI EN ISO 11640	≥ 3 Scala dei Grigi / GREY SCALE
SOLIDITÀ DEL COLORE ALLO STROFINIO CON SUDORE ALCALINO - 20 CICLI ALKALINE SOLUTION RUB FASTNESS - 20 CYCLES	UNI EN ISO 11640	≥ 3 Scala dei Grigi / GREY SCALE
SOLIDITÀ DEL COLORE ALLA LUCE ARTIFICIALE FASTNESS TO LIGHT	EN ISO 105-B02	≥ 3 Scala dei Blu / BLUE SCALE

TEST FISICI / PHYSICAL CHARACTERISTICS

RESISTENZA ALLA LACERAZIONE - STRAPPO SINGOLO TEAR STRENGTH	EN ISO 3377-1	> 20 N
INFIAMMABILITÀ - TEST DELLA SIGARETTA FLAMMABILITY - CIGARETTE TEST	UNI EN 1021-1	MANCATA ACCENSIONE / NO IGNITION
INFIAMMABILITÀ - TEST DEL FIAMMIFERO FLAMMABILITY - MATCH TEST	UNI EN 1021-2	MANCATA ACCENSIONE / NO IGNITION

TEST CHIMICI / CHEMICAL CHARACTERISTICS

METALLI PESANTI: CROMO TOTALE (COME CR), ALLUMINIO (COME AL), TITANIO (COME TI), ZIRCONIO (COME ZR), FERRO (COME FE) METALS: CHROME, ALUMINUM, TITANIUM, ZIRCONIUM, IRON	UNI EN ISO 17072-2	≤ 1000 MG/KG
---	--------------------	--------------

L'ARTICOLO REALIZZATO NEL RISPETTO DELLA DIRETTIVA REACH
OUR LEATHER IS PROCESSED IN CONFORMITY WITH REACH REGULATION

PULIZIA E MANUTENZIONE / CLEANING AND MAINTENANCE



EVITARE LA LUCE DIRETTA DEL SOLE
AVOID PLACING LEATHER NEAR DIRECT SUN



SPOLVERARE REGOLARMENTE LA PELLE CON UN PANNINO MORBIDO ED ASCIUTTO
DUST REGULARLY WITH A SOFT AND DRY CLOTH



EVITARE L'ESPOSIZIONE A FONTI DI CALORE
KEEP THE LEATHER AWAY FROM HEAT SOURCES

CERTIFICAZIONI / CERTIFICATIONS



ISO/TS 14067



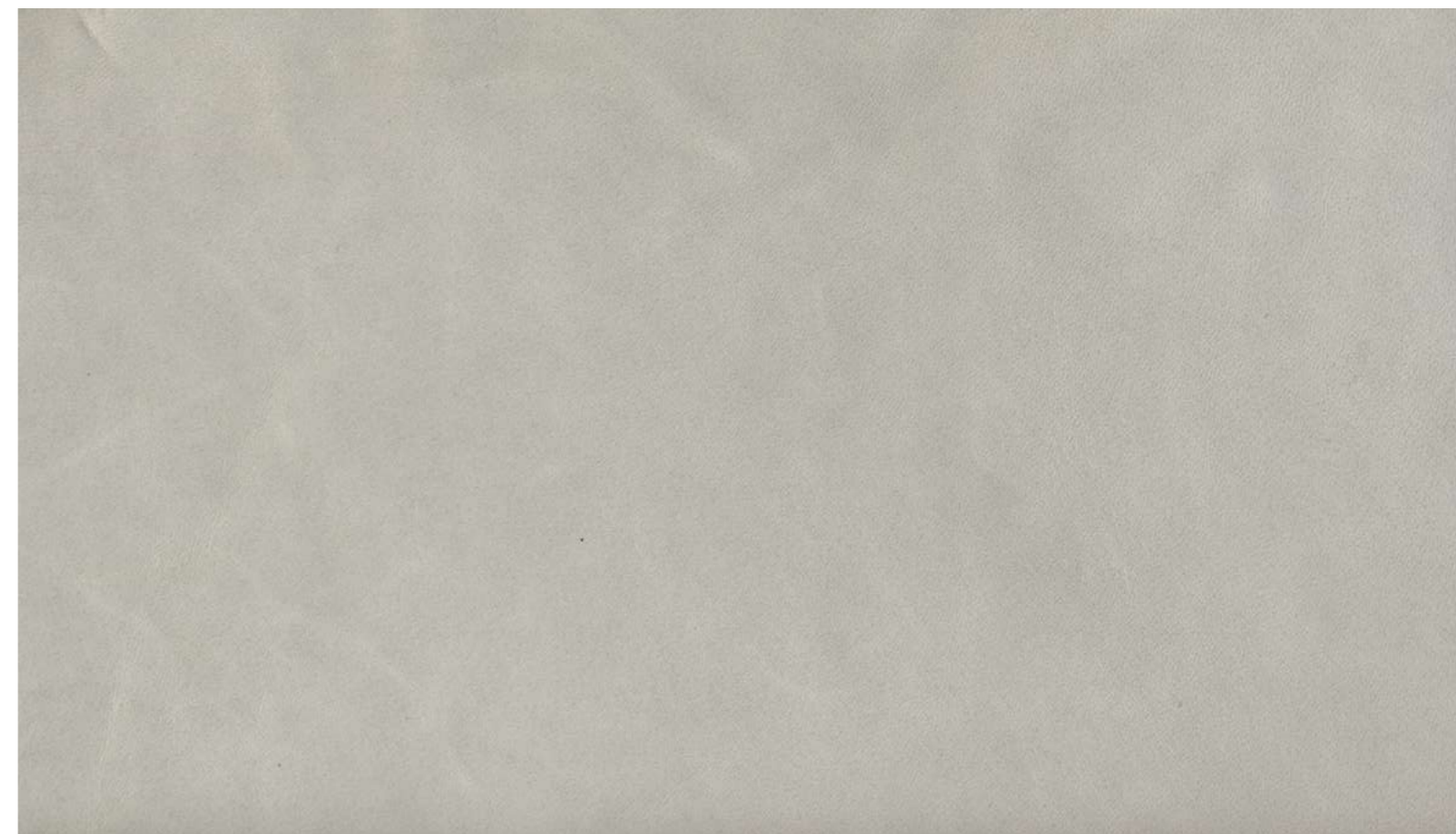
UNI 11239



ISO 14025

NOTE / NOTE

LA PELLE STELVIO PUÒ PRESENTARE LIEVI IMPERFEZIONI E UN DIVERSO GRADO DI LUCENTEZZA E TONALITÀ A GARANZIA DELLA NATURALITÀ DEL PRODOTTO.
STELVIO LEATHER MAY SHOW SLIGHT IMPERFECTIONS AND VARIOUS DEGREES OF SHINE AND SHADES. ALL THIS IS A GUARANTEE OF THE NATURALNESS OF THE PRODUCT.



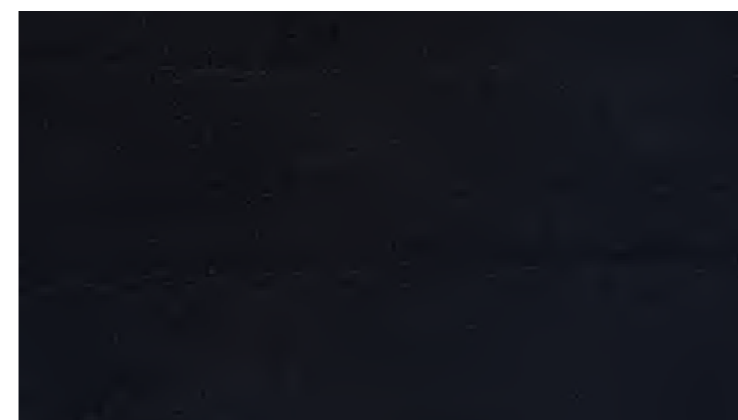
VINTAGE 15 PERLA



VINTAGE 25 SEPPIA



VINTAGE 10 MORO



VINTAGE 20 NERO

Nome <i>Name</i>	VINTAGE
Categoria <i>Category</i>	Pelle Y
Pelle <i>Leather</i>	Bovina europea. ANILINA con grana naturale. <i>European leather. ANILINE with natural leather.</i>
Spessore (mm) <i>Thickness (mm)</i>	0.8 - 1.0
Concia <i>Tanning</i>	Al cromo <i>Chrome</i>
Tintura <i>Dyeing</i>	Passante <i>Permeable</i>
Rifinitone <i>Finishing</i>	Esente <i>None</i>
Note <i>Notes</i>	<p>Presenta lievi imperfezioni, venature e un diverso grado di lucentezza e tonalità, a garanzia di un prodotto con caratteristiche naturali di pregio. Nell'abbinamento tessuto-pelle, si raccomanda il lavaggio a mano in acqua; il lavaggio a secco e qualsiasi trattamento al cloro danneggiano la pelle.</p> <p><i>It show slight imperfections, veining and various degrees of shine and shades. All this is a guarantee of the naturalness of the product. In the combination fabric-leather we recommend hand-washing, dry cleaning and any chlorine treatment will damage leather.</i></p>

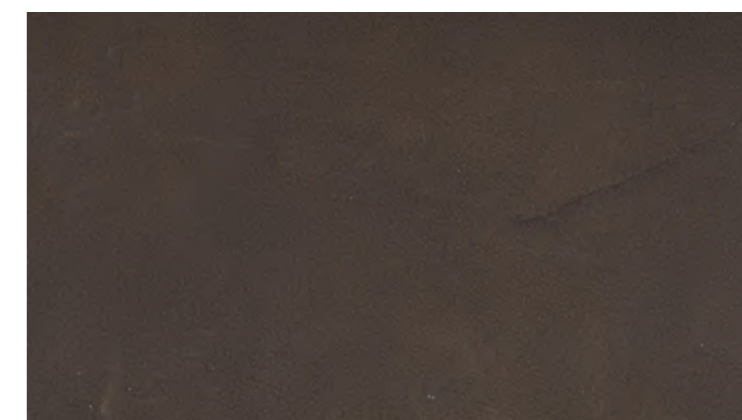
CLVTO_0714



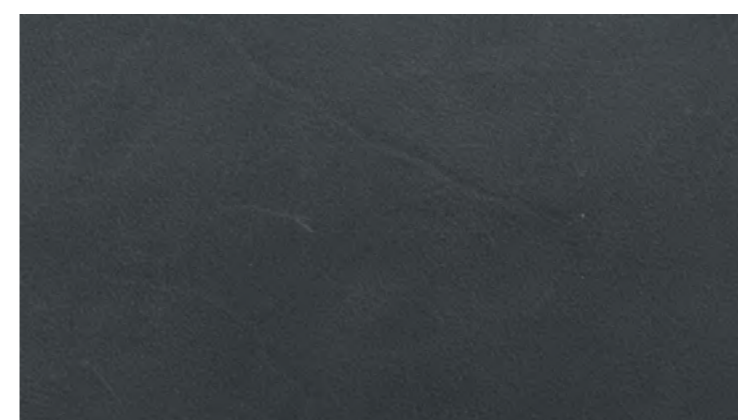
WILD 02 CUOIO



WILD 06 SEPPIA



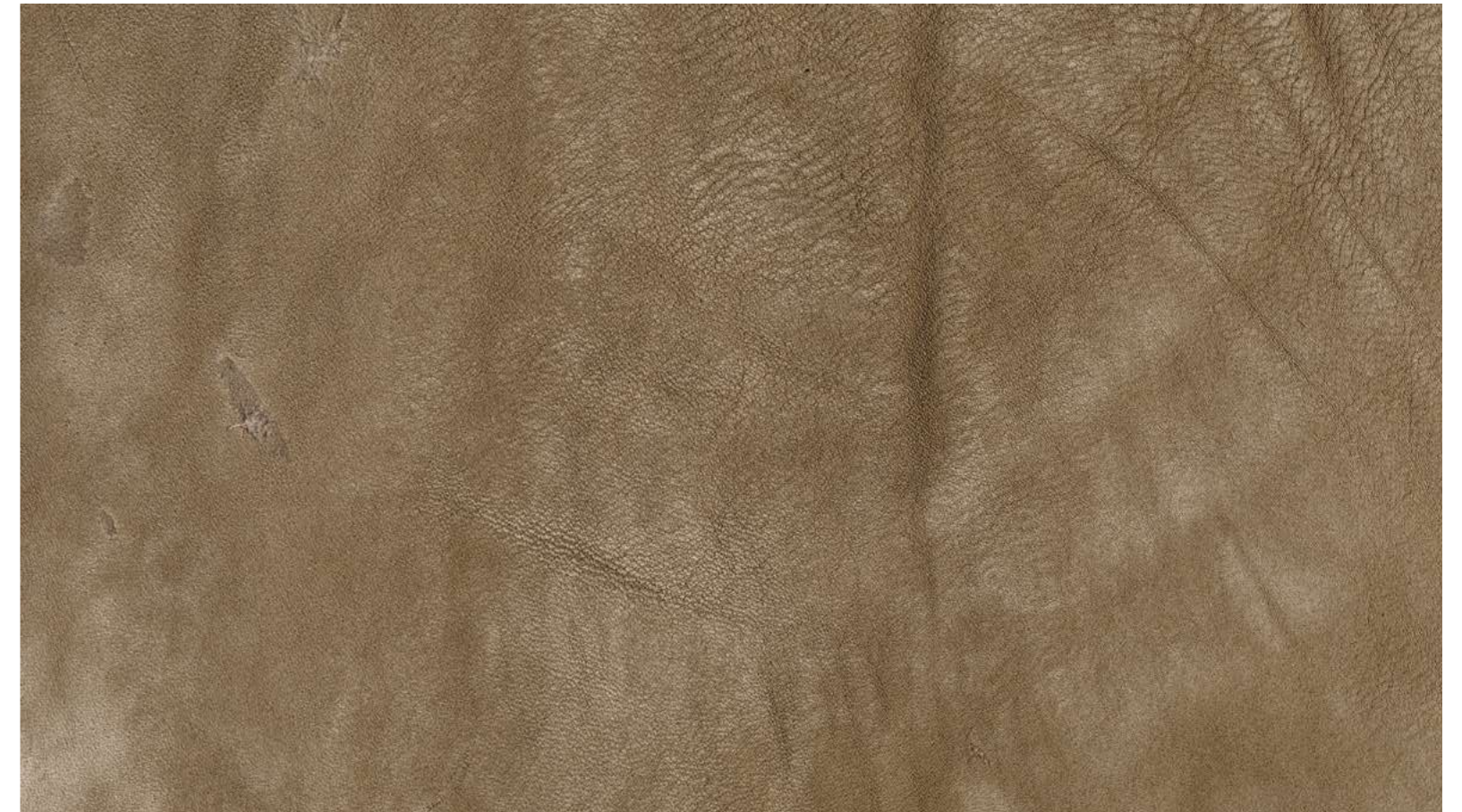
WILD 04 MORO



WILD 07 ANTRACITE

Nome <i>Name</i>	WILD
Categoria <i>Category</i>	Pelle Z
Pelle <i>Leather</i>	Bovina europea. ANILINA con grana naturale. <i>European leather. ANILINE with natural leather.</i>
Spessore (mm) <i>Thickness (mm)</i>	1.1 - 1.3
Concia <i>Tanning</i>	Minerale e vegetale <i>Mineral and Vegetal</i>
Tintura <i>Dyeing</i>	Passante <i>Permeable</i>
Rifinitura <i>Finishing</i>	Esente <i>None</i>
Note <i>Notes</i>	Le pelli di prima qualità all'anilina, possono presentare lievi imperfezioni e un diverso grado di lucentezza e tonalità a garanzia della naturalità del prodotto. <i>WORN leather is hand-made nabuk effect. Top quality aniline leather can have slight imperfections and various degrees of shine and shades. All this is a guarantee of the naturalness of the product.</i>

CLWDO_0717



WORN 05 BEIGE



WORN 04 SABBIA



WORN 02 MORO



WORN 01 SEPPIA



WORN 03 NERO

Nome <i>Name</i>	WORN
Categoria <i>Category</i>	Pelle Y
Pelle <i>Leather</i>	Bovina europea. NABUK. <i>European leather. NABUK.</i>
Spessore (mm) <i>Thickness (mm)</i>	1.3 - 1.5
Concia <i>Tanning</i>	Al cromo <i>Chrome</i>
Tintura <i>Dyeing</i>	Passante <i>Permeable</i>
Rifinitura <i>Finishing</i>	Esente <i>None</i>
Note <i>Notes</i>	<p>La pelle WORN è nabukata a mano. Può presentare lievi imperfezioni e un diverso grado di lucentezza e tonalità a garanzia della naturalità del prodotto. <i>WORN leather is hand-made nabuk effect. It may show slight imperfections and various degrees of shine and shades. All this is a guarantee of the naturalness of the product.</i></p>

CLWR0_0717

CLTP:0619



gruppoeuromobil.com



Desiree S.p.A.
Via Piave, 25
31028 Tezze di Piave - TV - Italy
Tel. +39 0438 2817
Fax +39 0438 488077